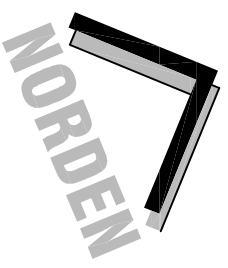
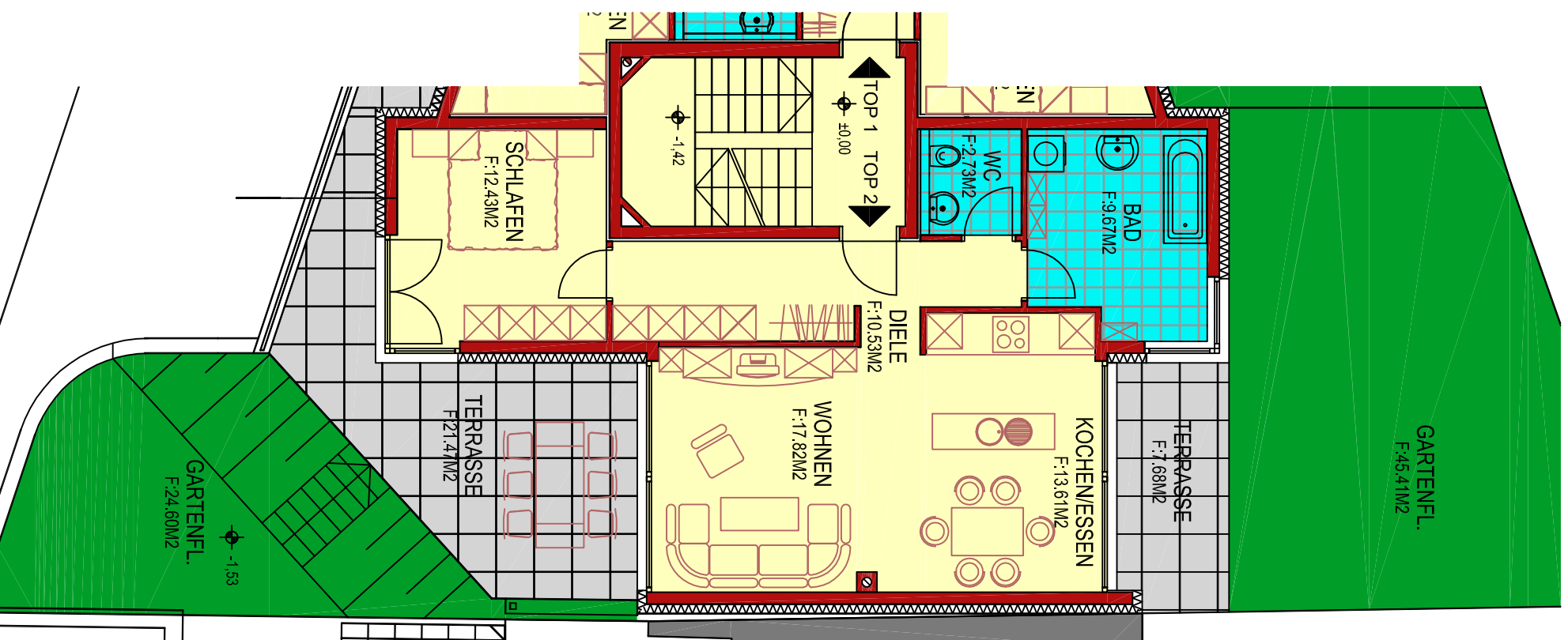
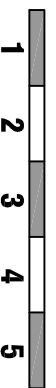


# GRUNDRISS



**GOLDINGER**  
WOHNBAU GESELLSCHAFT MBH



TOP 02	EG	2 ZI-WHG
WOHNNUTZFLÄCHE		66,79 m <sup>2</sup>
TERRASSEN-/BALKONFLÄCHE		29,15 m <sup>2</sup>
GARTENANTEIL		70,01 m <sup>2</sup>

**WA SPECKBACHERSTRASSE - ABSAM**