

Installation Instructions and Declaration of Performance

Mixed penetration seal TIROTECH®

according to the European
Technical Assessment ETA-17/0586

TIROTECH® fire protective mortar



for sealing openings in
walls and floors/ceilings

RORCOL pipe collars



for plastic pipes, multi-layer composite
pipes, metal pipes and cables

Pipe section



for metal pipes

INSTALLATION INSTRUCTIONS

Installation steps	
■ TIROTECH® fire protective mortar	4
■ RORCOL pipe collars	6
■ Pipe sections	9
Installation notes	
■ General	10
■ TIROTECH® fire protective mortar	11
■ RORCOL pipe collars	12
■ Pipe sections	13

CERTIFICATES

Certificate of constancy of performance	14
---	----

DECLARATION OF PERFORMANCE

General characteristics	15
Permissible separating elements / penetration seal size	16
Working clearance	18
Reinforcement	20
Permissible pipe types	22
Permissible insulation	26
Installation details & application areas	
■ Flexible walls	28
■ Rigid & cross-laminated timber walls	30
■ Rigid & cross-laminated timber floors/ceilings	34
■ Rigid & cross-laminated timber floors/ceilings	38
■ U-application	40
■ Pipe sections	42

CONSTRUCTION DRAWINGS

RORCOL pipe collars	45
Pipe sections	47

Important:

Please read these Installation Instructions and Declaration of Performance carefully and keep them for future reference.

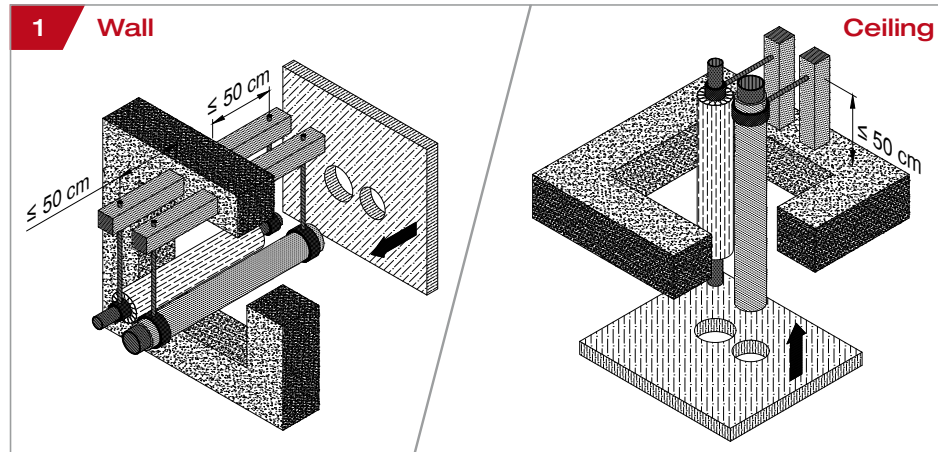
The installation must be carried out exclusively according to these Installation Instructions and Declaration of Performance. Deviations during installation may result in a considerable reduction in the fire resistance time.

Typographical and printing errors as well as technical changes cannot be ruled out.

For penetration elements and classifications not mentioned in these installation instructions, please contact GOIDINGER Bau- und Leichtbeton GmbH.

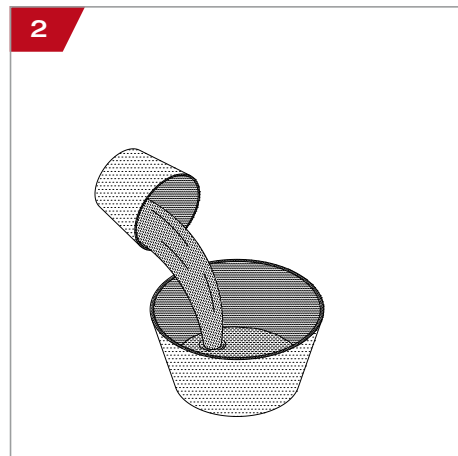
Please note the currently valid General Terms and Conditions at www.goidinger.com.

This document is protected by copyright. All rights, in particular the right of reproduction and distribution as well as translation, are reserved. Violations may result in criminal prosecution.

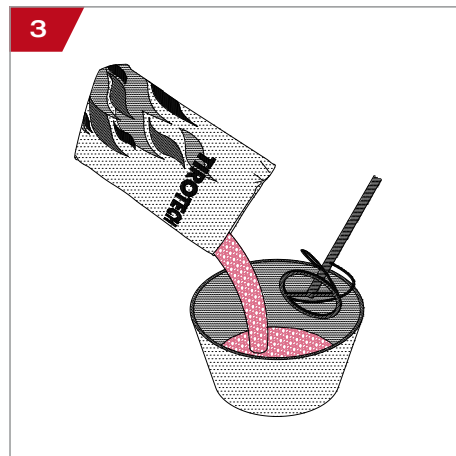


Mount non-flammable fixing max. 50 cm on both sides of the wall or above the ceiling. Install formwork (e.g. EPS insulation board).

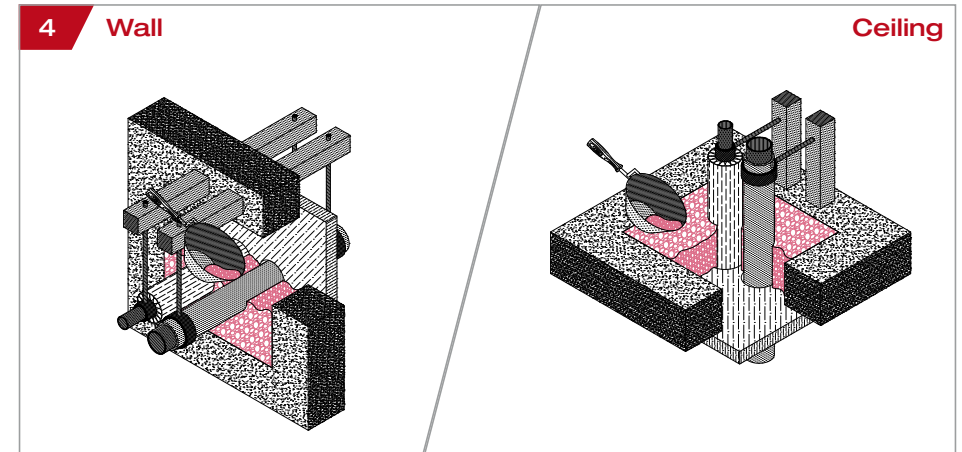
When installing in cross-laminated timber constructions: Attach reinforcement as per page 20.



Prepare mortar trough (min. 50 litres). Fill with clean water, approx. 5 litres / bag.

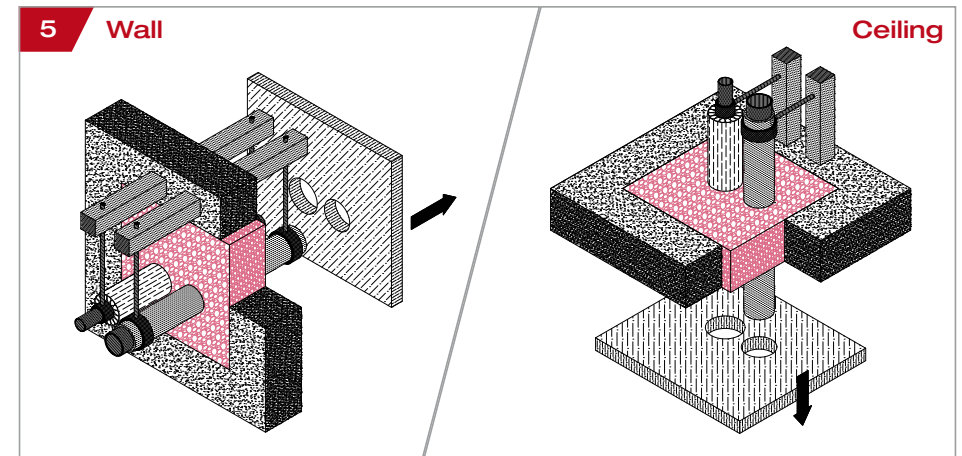


Add the entire contents of the bag of TIROTECH® fire protective mortar and mix with whisk (min. Ø 12 cm), approx. 1 minute.



Apply immediately after mixing. Fill wall or ceiling openings, level off flush and smooth lightly using a trowel, spatula, etc.

Ensure that there are no cavities.



The formwork can be removed as soon as it begins to set. Fill in any imperfections on the side where the formwork has been removed, making sure that these are full and flush. Remove any excess.

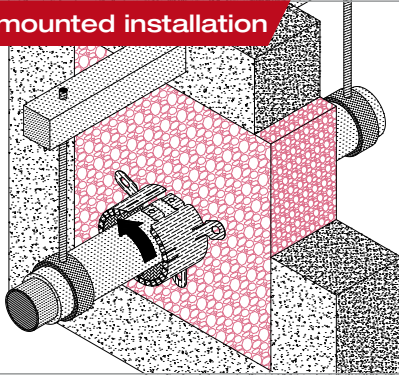
Installation steps – RORCOL surface-mounted

With the closure system, the RORCOL pipe collars are opened, positioned around the pipe and fastened to the TIROTECH® fire protective mortar.

Important: The dimensions of the pipe collar must be selected so that it encloses the pipe or the insulated pipe as tightly as possible!

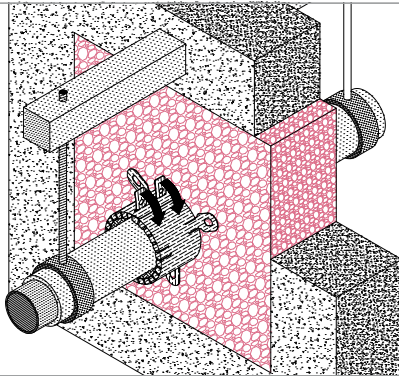
Surface-mounted installation

1



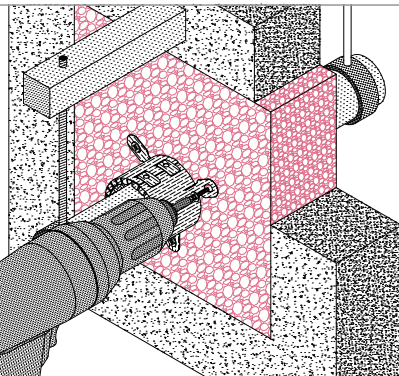
Open the pipe collar and position it around the pipe or insulated pipe.

2



Close the pipe collar using the closure system.

3



Fasten the pipe collar in place using 6 x 90 mm chipboard screws.

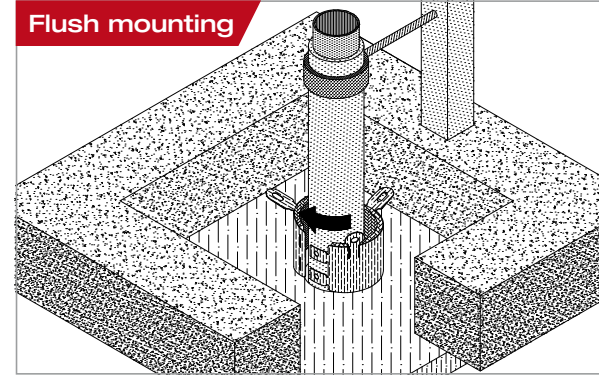
Installation steps – RORCOL flush-mounted

With the closure system, the RORCOL pipe collars are opened, positioned around the pipe and mounted on or flush mounted into the formwork.

Important: The dimensions of the pipe collar must be selected so that it encloses the pipe or the insulated pipe as tightly as possible!

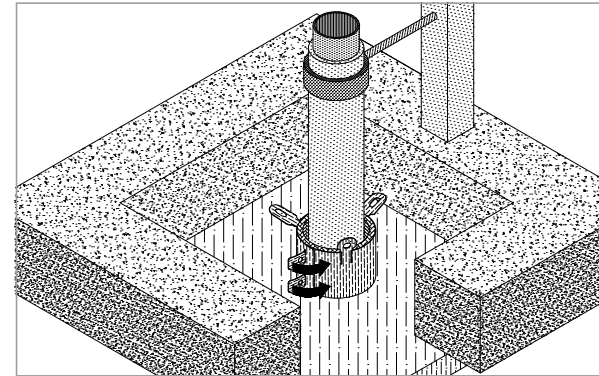
Flush mounting

1



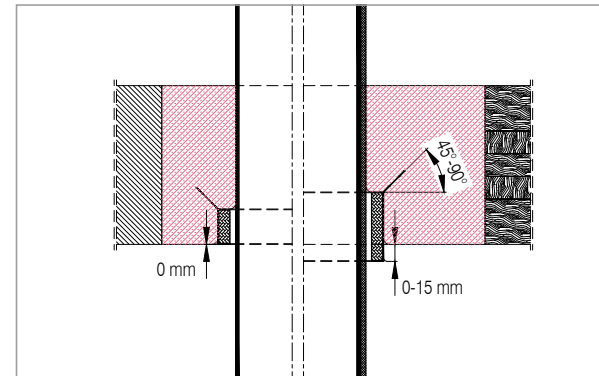
Open the pipe collar and position it around the pipe or insulated pipe.

2



Close the pipe collar using the closure system.

3



Caution:

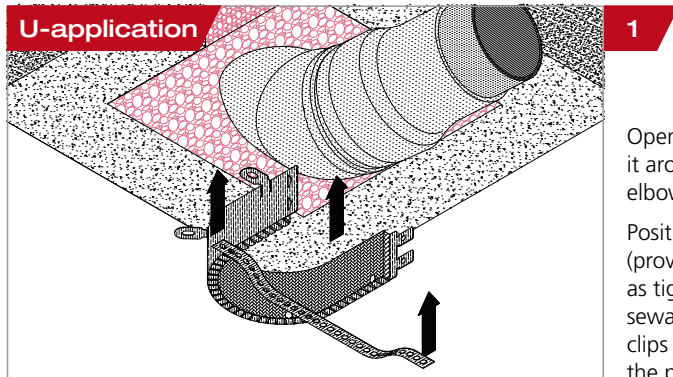
The mounting clips must be aligned at an angle of between 45-90°.

The annular gap between the pipe and the pipe collar must not be filled with TIROTECH® fire protective mortar.

Installation steps – RORCOL as U-application

The RORCOL V60 pipe collar, used as U-application, is opened with the closure system, positioned around the sewage elbow and fastened to the TIROTECH® fire protective mortar.

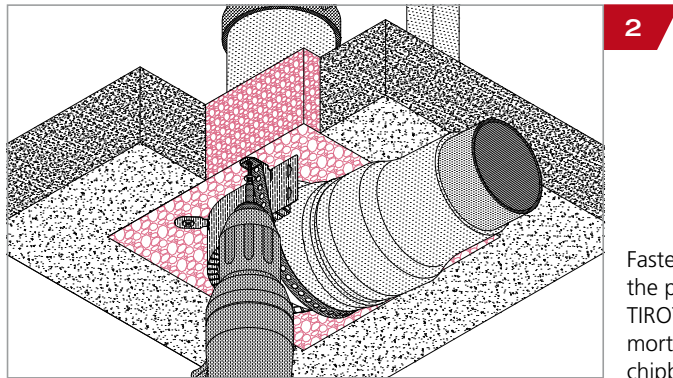
Important: The size of the pipe collar must be one larger than that of the sewage pipe!



1

Open the pipe collar and place it around the insulated sewage elbow(s) on the ceiling.

Position the perforated tape (provided by the customer) as tightly as possible over the sewage pipe and the mounting clips on the closure system of the pipe collar.

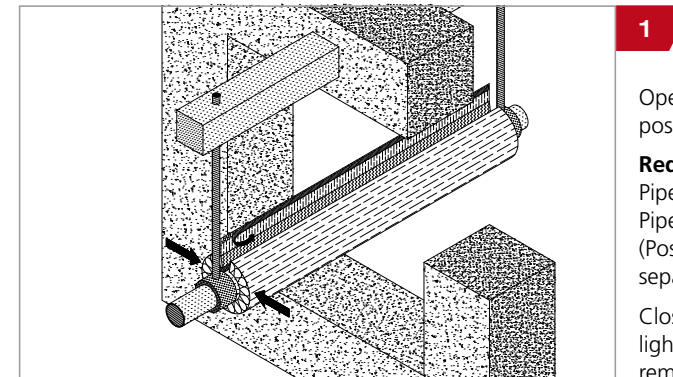


2

Fasten the pipe collar and the perforated tape to the TIROTECH® fire protective mortar using 6 x 90 mm chipboard screws.

Installation steps – pipe section

The pipe section is opened, positioned around the pipe and fastened using the self-adhesive overlap and binding wire.



1

Open the pipe section and position it over the metal pipe.

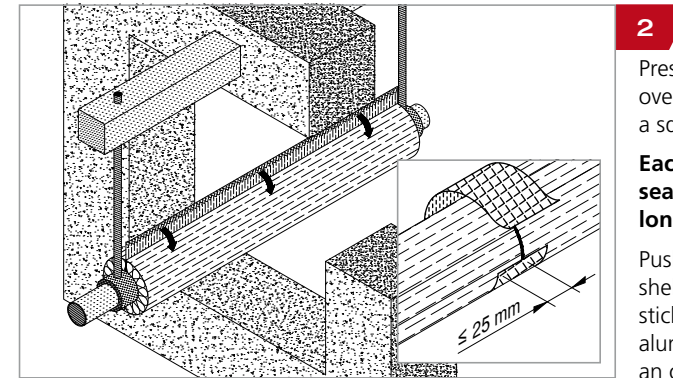
Required insulation lengths:

Pipe $\leq \varnothing 54$ – 1 m

Pipe $> \varnothing 54$ – 2 m

(Position in the centre of the separating element)

Close the longitudinal seam by lightly pressing it together and remove the peel-off tape.

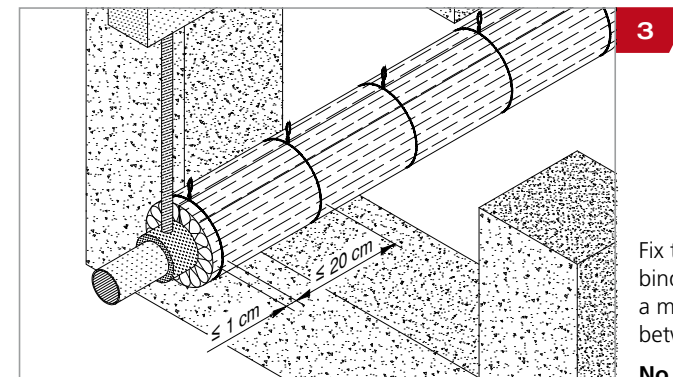


2

Press down the self-adhesive overlap and smooth down with a squeegee.

Each pipe shell must be sealed tightly along the longitudinal joint.

Push the subsequent pipe shells together at the ends and stick them together using pure aluminium adhesive tape with an overlap of at least 25 mm.



3

Fix the pipe shells in place using binding wire ($\geq \varnothing 0.6$ mm) with a maximum distance of 20 cm between the windings.

No spiral wrapping!

Use category

The mixed penetration seal TIROTECH® is intended for use at temperatures below 0°C with UV exposure but without rain exposure, and can therefore be classified as type Y₁ according to EAD 350454-00-1104 point 2.2.9.3.1. Since the requirements for type Y₁ are met, the requirements for type Y₂, Z₁ and Z₂ are also met.

Although a penetration seal is only intended for use inside the building, it may be exposed to the weather to some extent during the construction period for a certain period of time before the building envelope is complete. In this case, measures must be taken to temporarily protect the penetration seals from the weather.

It must be ensured that...

- ...any damage to the penetration seal is repaired accordingly.
- ...installation of the penetration seal does not affect the structural integrity of the neighbouring structural part, including in the event of fire.
- ...the lintel or ceiling above the penetration seal is dimensioned statically and for fire protection in such a way that the penetration seal is not subjected to any additional vertical load (other than its own weight).
- ...the thermal expansion of the pipe is absorbed in such a way that there is no load on the penetration seal.
- ...the ducts are fixed to the adjacent element (not to the penetration seal) according to the applicable regulations, so that in the event of a fire no additional mechanical load can be placed on the penetration seal.
- ...the fixing of the ducts is maintained during the classification period.
(Melting point ≥ 1006°C for EI90 or ≥ 1049°C for EI120)
- ...in the event of fire, additional measures must be taken to shut down pneumatic conveyors, compressed air lines, etc.

Labelling

A completed identification plate must be attached.

Safety

Keep away from children.
Keep away from food, drink and animal feed.

Storage

Store in a cool and dry place.
TIROTECH® fire protective mortar can be stored for 6 months in a dry place.

Preparation and substrate

Openings in walls and floors/ceilings must be boarded on one side. The faces of the recess must be solid, dry and free from any dust or grease. Due to the light weight and the consistency of the fire protective mortar, roughly cut EPS or XPS insulation boards, for example, can be used for the formwork. Fire-resistant plasterboards (thickness ≥ 15 mm) or steel sheets (thickness ≥ 1 mm) can be used as permanent formwork.

When installing in flexible walls, the opening in the wall must be lined all round with the same profiles that are used for the flexible wall.

These profiles must be completely filled with TIROTECH® fire protective mortar.

For more details, see page 19.

When installing in cross-laminated timber walls or ceilings, a reinforcement of screws or nails is required. For more details, see page 20.

Application

Pour approx. 5 litres of pure water into a round mortar trough with a minimum capacity of 50 litres. Add the entire contents of a bag (30 litres) of TIROTECH® fire protective mortar and stir with a whisk (≥ Ø 12 cm) for approx. 1 minute until a trowel-ready mortar is formed. Add any additional water required during the mixing process. Because TIROTECH® fire protective mortar sets immediately, it must be used straight after mixing! To do this, pour the mortar into the ceiling hollow in one operation until it reaches the full thickness of the recess or apply it to the wall area – making sure there are no cavities – and then level and smooth it out lightly using a trowel, spatula, etc.

As soon as the TIROTECH® fire protective mortar starts to set – usually after a few minutes, depending on the ambient temperature – the formwork can be removed from the back/bottom of the penetration seal. Fill any voids on the side where the formwork has been removed with TIROTECH® fire protective mortar, ensuring that they are full and flush, and remove any excess.

The temperature of the material during application should be at least 8 °C. The yield is 30 litres of wet mortar.

Subsequent processing

If pipes, cables or conduits are to be laid subsequently in the cured mortar seal, ensure that the annular gap or other imperfections are sealed after (core) drilling and installation (see above).

Use category

TIROTECH® fire protective mortar is intended for use in areas exposed to weathering and can therefore be classified as type X according to EAD 350454-00-1104 point 2.2.9.3.1.

Materials that fulfil the requirements for type X also fulfil the requirements for type Y₁, Y₂, Z₁ and Z₂. Materials that fulfil the requirements for type Y₁ also fulfil the requirements for type Y₂, Z₁ and Z₂. Materials that fulfil the requirements for type Y₂ also fulfil the requirements for type Z₁ and Z₂. Materials that fulfil the requirements for type Z₁ also fulfil the requirements for Z₂.

Installation

When installed in walls, the pipe collars must be installed on one or both sides; when installed in floors/ceilings, they must be installed on the underside of the floor/ceiling. Observe the national building regulations during use and during installation. The product must not be modified and must not be exposed to any mechanical loads. Fire transmission downwards, caused by burning material dripping through a pipe to lower floors, is not assessed in the European Technical Assessment. The installation must be carried out exclusively by authorised personnel. The suitability of our products for the specific requirements must be verified by the user. The pipe collars must be selected so that they enclose the pipe to be sealed as tightly as possible.

For penetration elements and classifications not mentioned in these installation instructions, please contact GOIDINGER Bau- und Leichtbeton GmbH.

Service support construction collars in place

The pipe collar must be fixed with non-combustible screws.

Type of installation	Permissible fixing methods
Surface-mounted	Chipboard screws $\geq 6 \times 90$ mm
Flush-mounted	No additional fixing required

Insulation

Continued Sustained insulation (CS) must have a minimum length of 500 mm in both directions measured from the surface of the separating element, Local Sustained insulation (LS) must have a minimum length of 100 mm in both directions.

For detailed insulation materials and thicknesses, see “Permissible Insulation” table on page 26 and installation details on page 28-41.

Pipe end configurations

Plastic pipes are tested U/U (uncapped/uncapped).

Multi-layer composite pipes are tested U/C (uncapped/capped).

Metal pipes are tested U/C (uncapped/capped).

Electrical conduits are tested U/C (uncapped/capped). They must be sealed on at least one side of the penetration seal with commercially available silicone sealant.

Pipe fixing

All conduits must be fixed on both sides of the wall or above the ceiling using non-combustible suspension systems. The maximum permissible distance from the separating element to the suspension system is 50 cm. The fixing must be selected so that the pipe clamp encloses the pipe as tightly as possible and ensures rigid suspension. Simply placing or laying the pipe in the pipe clamp is not permitted.

Installation

Pipe section must be positioned in the centre of the wall or in the centre of the ceiling. Observe the national building regulations during use and during installation. The product must not be modified and must not be exposed to any mechanical loads. The installation must be carried out exclusively by authorised personnel. The suitability of our products for the specific requirements at hand must be verified by the user.

For penetration elements and classifications not mentioned in these installation instructions, please contact GOIDINGER Bau- und Leichtbeton GmbH.

Fixing the insulation sections in place

Insulation sections must be fixed with binding wire (min. $\varnothing 0.6$ mm), with a maximum distance of 20 cm between the windings (no spiral wrapping). The first winding must be positioned 10 mm from the surface of the separating element, and the last winding 10 mm from the edge of the insulation section.

Joining insulation sections

To join pipe shells, position them end to end with no clearance and bond them using aluminium adhesive tape with an overlap of at least 25 mm.

Insulation length

For metal pipes with an external diameter ≤ 54 mm, insulation sections must have an insulation length of at least 1 m, and for an external diameter > 54 mm they must have an insulation length of at least 2 m (positioned in the centre of the separating element). In the case of diagonal installation, the minimum insulation length, measured from the surface of the separating element, must be observed. This is at least 450 mm when installed in walls and 430 mm when installed in ceilings for metal conduits with an external diameter ≤ 54 mm and at least 950 mm when installed in walls and 930 mm when installed in ceilings for metal conduits with an external diameter > 54 mm. – see installation details on page 42.

Pipe end configurations

Metal pipes are tested U/C (uncapped/capped).

Pipe fixing

All conduits must be fixed on both sides of the wall or above the ceiling using non-combustible suspension systems. The maximum permissible distance from the separating element to the suspension system is 50 cm. The fixing must be selected so that the pipe clamp encloses the pipe as tightly as possible and ensures rigid suspension. Simply placing or laying the pipe in the pipe clamp is not permitted.



Prüf-, Inspektions- und
Zertifizierungsstelle



Zertifikat der Leistungsbeständigkeit

1139-CPR-0668/17 (3. Neufassung)

Gemäß der Verordnung (EU) Nr. 305/2011 des Europäischen Parlaments und des Rates vom 9. März 2011 (Bauprodukteverordnung - CPR), gilt dieses Zertifikat für die Bauprodukte

Brandschutzprodukte zum Abdichten und Verschießen von Fugen und Öffnungen und zum Aufhalten von Feuer im Brandfall: Abschottungen

Brandschutzmörtel mit der Handelsbezeichnung „TIROTECH®“

in Verkehr gebracht unter dem Namen oder der Handelsmarke von

**Goidinger Bau- und Leichtbeton GmbH
A-6112 Wattens, Salzburgerstraße 40**

und hergestellt im Herstellungsbetrieb

**Goidinger Bau- und Leichtbeton GmbH
Werk Wattens**

Dieses Zertifikat bescheinigt, dass alle Vorschriften über die Bewertung und Überprüfung der Leistungsbeständigkeit beschrieben in der

ETA-17/0586, herausgegeben am 11.08.2023

und

EAD 350454-00-1104

entsprechend System 1 für die in der ETA ausgewiesene Leistung angewendet werden und dass die vom Hersteller durchgeführte werkseigene Produktionskontrolle bewertet wurde zur Sicherstellung der

Leistungsbeständigkeit des Bauprodukts.

Dieses Zertifikat wurde erstmals am 18. August 2017 ausgestellt. Die vorliegende 3. Neufassung des Zertifikates 1139-CPR-0668/17 ersetzt die 2. Neufassung des Zertifikates vom 10. November 2020 und bleibt gültig, solange weder die ETA, das EAD, das Bauprodukt, das AVCP-Verfahren noch die Herstellbedingungen im Werk wesentlich geändert werden und sofern es nicht von der notifizierten Produktzertifizierungsstelle ausgesetzt oder zurückgezogen wird.

Leiter der Zertifizierungsstelle
Dipl.-Ing. Martin Fehringner
Oberstadtbaurat



Leiter der Prüf-, Inspektions- und Zertifizierungsstelle
Dipl.-Ing. Georg Pommer
Senatsrat

Wien, 13. November 2023

MA 39 – CE 23-06054 – Rinnböckstraße 15/2, 1110 Wien, post@ma39.wien.gv.at

DECLARATION OF PERFORMANCE

No. 2023/TIROTECH according to Annex III of Regulation (EU) No. 305/2011
(Construction Products Regulation)

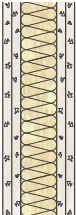

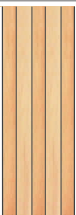
- 1. Unique identifier code of the product type:** TIROTECH®
- 2. Intended application:** Penetration sealing of combustible pipes, non-combustible pipes and cables through walls and ceilings according to installation instructions for ETA-17/0586
- 3. Manufacturer:** GOIDINGER Bau- und Leichtbeton GmbH
Salzburger Straße 40
6112 Wattens
AUSTRIA
- 4. System(s) for assessment and verification of constancy of performance:** System 1
- 5. European Assessment Document:** EAD 350454-00-1104, September 2017 edition
European Technical Assessment: ETA-17/0586 of 11/08/2023
Technical Assessment Body: Austrian Institute of Construction Engineering (OIB)
Notified body: NB 1139 – Municipal Department 39 – Testing, inspection and certification body of the City of Vienna

6. Declared performance:

Essential characteristics	Performance	Harmonised technical specification
Fire behaviour		
TIROTECH® fire protective mortar	Class A2-s1, d0	EN 13501-1
RORCOL V30 pipe collar	Class E	
RORCOL V60 pipe collar	Class E	
RORCOL AV60 pipe collar	Class E	
RORCOL M pipe collar	Class E	
FIRE PROOF pipe section	Class A2 _L -s1, d0	
Rockwool 800 pipe section	Class A2 _L -s1, d0	
Hazardous substances		
None		Council Directive 67/548/EEC, Regulation (EC) no 1272/2008 and EOTA Technical Report TR 034
Durability and serviceability		
TIROTECH® fire protective mortar	Use category X	EOTA Technical Report TR 024
RORCOL V30 pipe collar	Use category Y ₁	
RORCOL V60 pipe collar	Use category Y ₁	
RORCOL AV60 pipe collar	Use category Y ₁	
RORCOL M pipe collar	Use category Y ₁	
FIRE PROOF pipe section	Use category Y ₁	
Rockwool 800 pipe section	Use category Y ₁	



DECLARATION OF PERFORMANCE

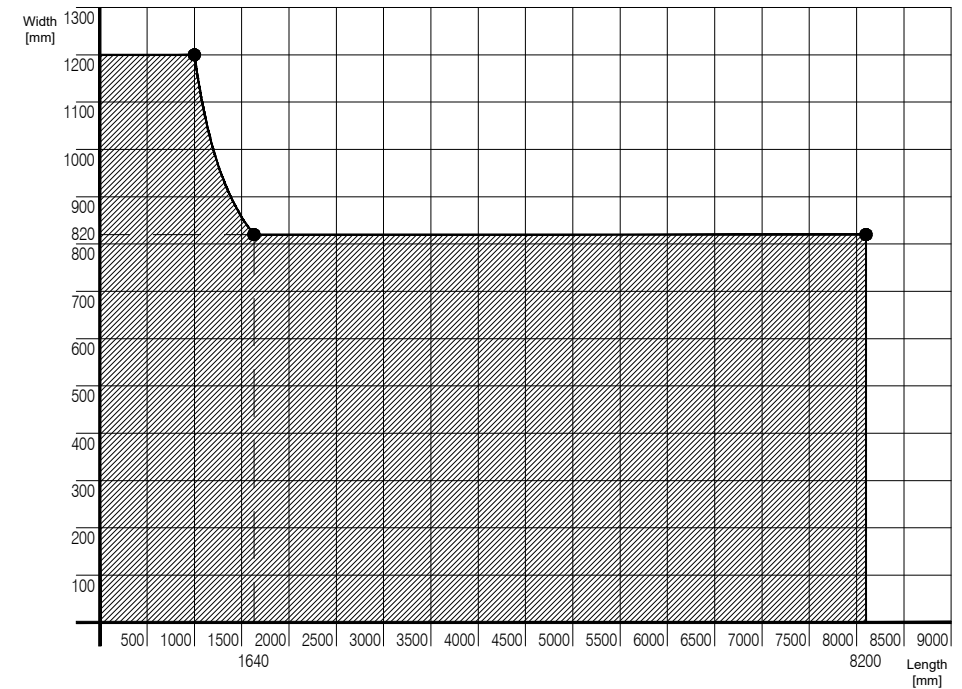
Permissible separating elements/penetration seal sizes

Separating element		Maximum penetration seal size [mm]	Page
RW		Flexible walls Thickness ≥ 100 mm Steel studs (CW profiles), cladding on both sides at least 12.5 mm thick and at least 2 layers, boards with classification A2-s1,d0 or A1 as per EN 13501-1	1000 x 600
		Rigid walls Thickness ≥ 100 mm Density $\geq 500 \text{ kg/m}^3$ Concrete and masonry components	1200 x 1000
		Cross-laminated timber walls According to ETA-06/0138 (KLH Massivholz GmbH), ETA-09/0036 (Mayr-Melnhof Holz Holding AG), ETA-12/0281 (HASSLACHER Holding GmbH), ETA-14/0349 (Stora Enso Wood Products GmbH), or ETA-20/0843 (Theurl Timber Structures GmbH) Thickness ≥ 100 mm, with or without cladding consisting of plasterboard as per EN 520	1200 x 1000

DECLARATION OF PERFORMANCE

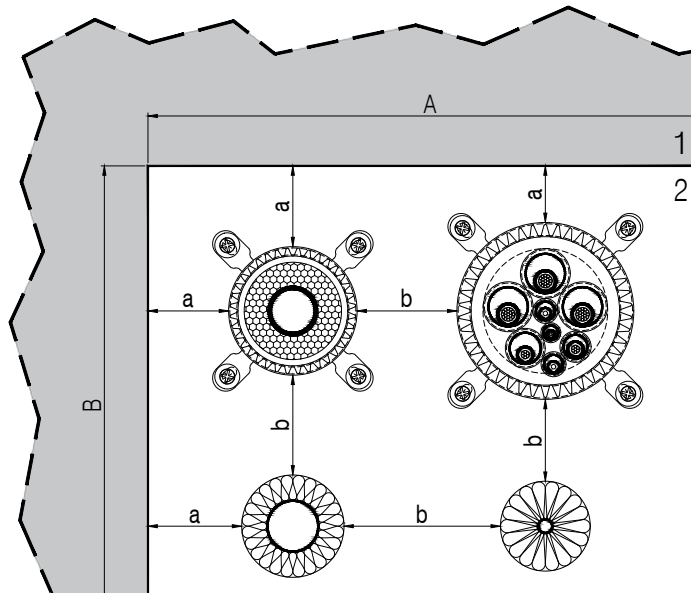
Permissible separating elements/penetration seal sizes

Separating element		Maximum penetration seal size [mm]	Page
RW		Rigid floors/ceilings Thickness ≥ 140 mm Density $\geq 500 \text{ kg/m}^3$	1200 x 800 or as per diagram
		Cross-laminated timber floors/ceilings According to ETA-06/0138 (KLH Massivholz GmbH), ETA-09/0036 (Mayr-Melnhof Holz Holding AG), ETA-12/0281 (HASSLACHER Holding GmbH), ETA-14/0349 (Stora Enso Wood Products GmbH), or ETA-20/0843 (Theurl Timber Structures GmbH) Thickness ≥ 140 mm, with or without cladding consisting of plasterboard as per EN 520	1200 x 800 or as per diagram

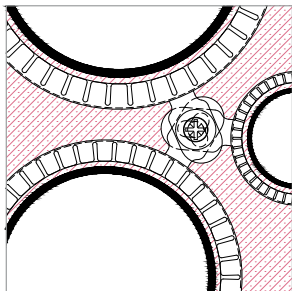


DECLARATION OF PERFORMANCE

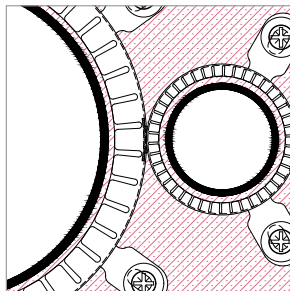
Working clearance



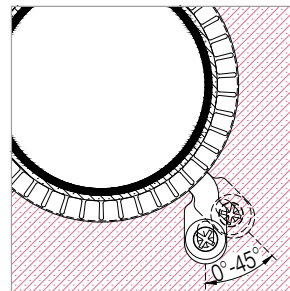
1	Separating element
2	Mixed penetration seal TIROTECH®
a = 30 mm	Minimum distance between RORCOL pipe collars and the edge of the penetration seal or between pipe sections and the edge of the penetration seal
b = 0 mm	Minimum distance between RORCOL pipe collars, between pipe sections or between RORCOL pipe collars and pipe sections
AxB	Penetration seal size, see page 16-17



Shared screw fixing for up to 3 pipe collars



Fitted mounting clips



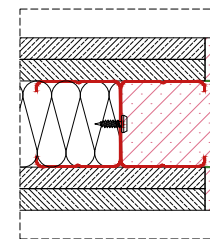
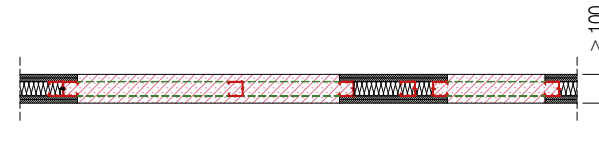
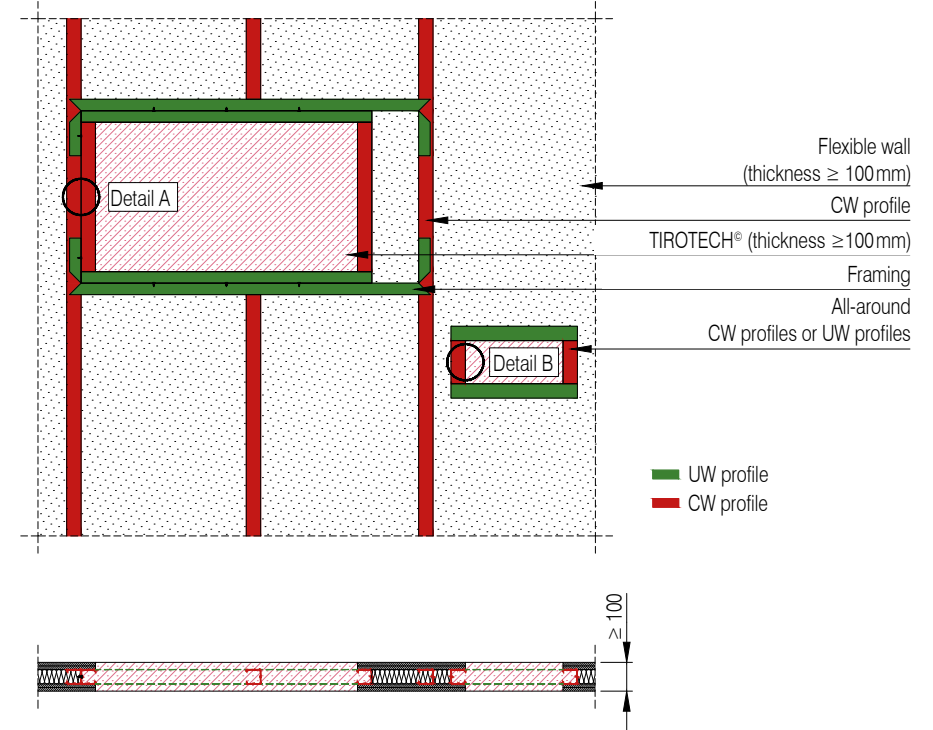
Twistable mounting clips

DECLARATION OF PERFORMANCE

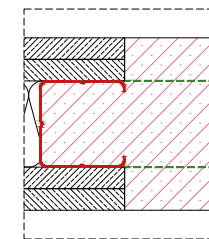
Reveal design – flexible walls

When installing in flexible walls, the opening in the wall must be lined all round with the same profiles that are used for the flexible wall.

These profiles must be completely filled with TIROTECH® fire protective mortar.



Detail A

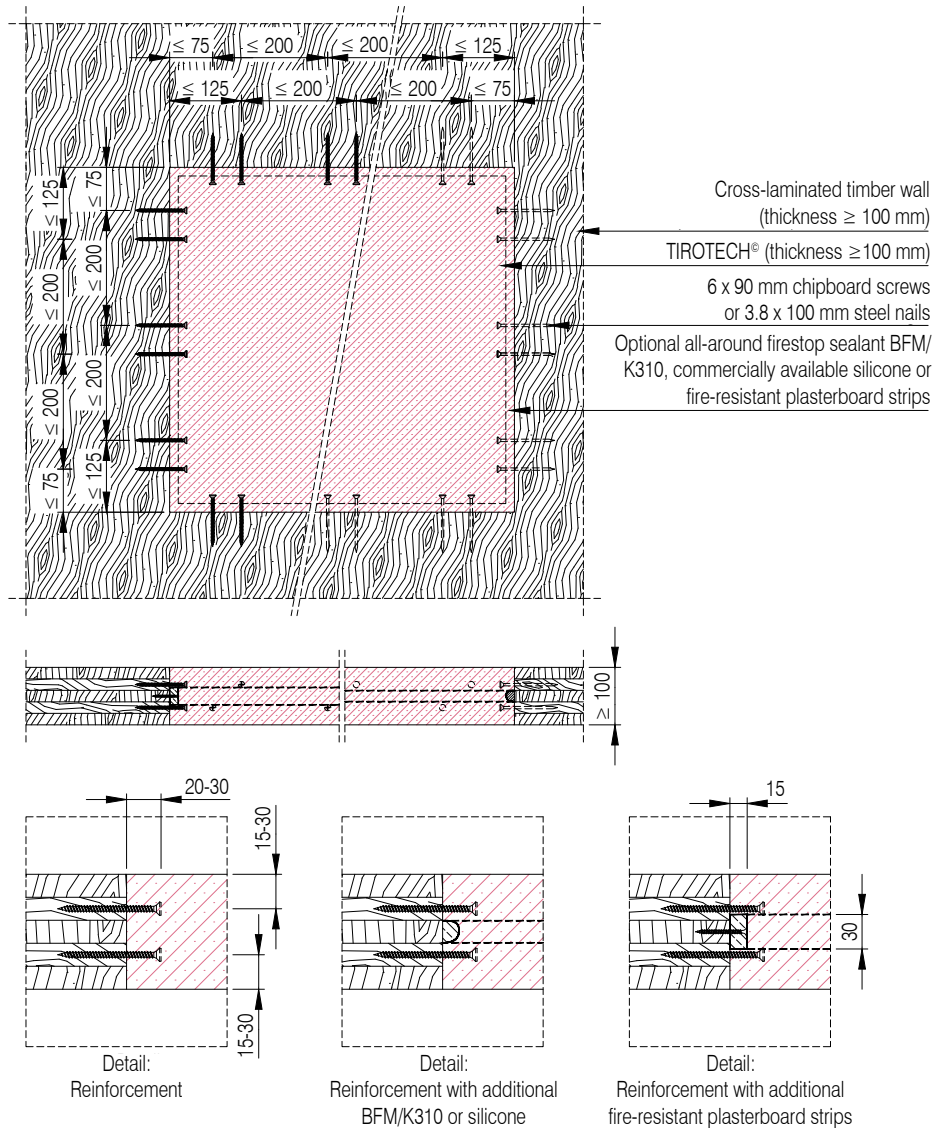


Detail B

DECLARATION OF PERFORMANCE

Reinforcement – cross-laminated timber walls

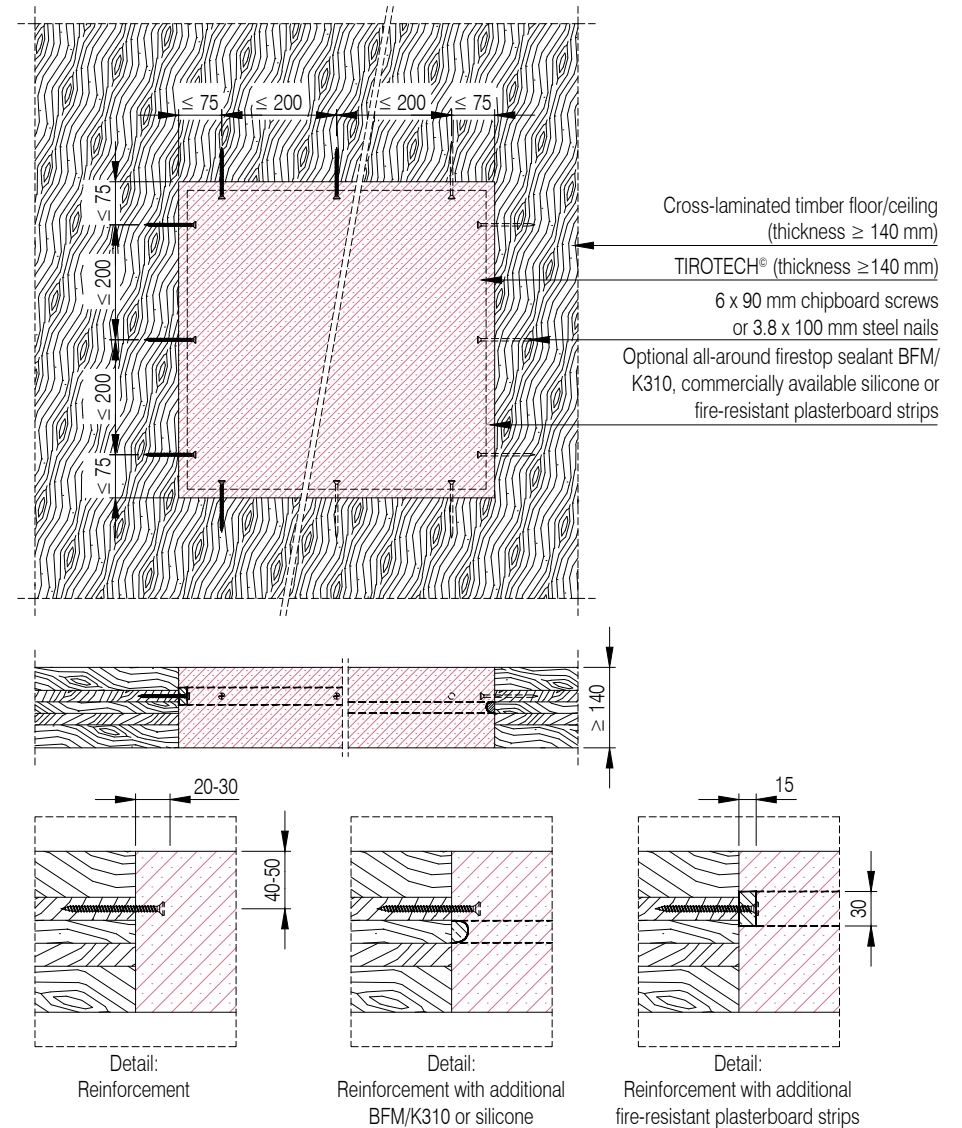
When installing in cross-laminated timber walls, steel nails or chipboard screws must be used around the perimeter of the openings as reinforcement. For improved smoke tightness, the wall opening must be sealed all round using AIR FIRE TECH firestop sealant BFM/K310, commercially available silicone or fire-resistant plasterboard strips.



DECLARATION OF PERFORMANCE

Reinforcement – cross-laminated timber floors/ceilings

When installing in cross-laminated timber floors/ceilings, steel nails or chipboard screws must be used around the perimeter of the openings as reinforcement. For improved smoke tightness, the wall opening must be sealed all round using AIR FIRE TECH firestop sealant BFM/K310, commercially available silicone or fire-resistant plasterboard strips.



Permissible pipe types

(1) Exclusively cross-laminated timber constructions according to ETA-06/0138, ETA-09/0036 and ETA-14/0349
(2) Exclusively cross-laminated timber constructions according to ETA-12/0281 and ETA-20/0843
(3) Exclusively cross-laminated timber constructions according to ETA-14/0349

Permissible pipe types

DECLARATION OF PERFORMANCE

Permissible pipe types

Pipe collar / pipe section	Material or product	Standard or manufacturer
RORCOL AV60	Metal pipes	Fire behaviour class A1 as per EN 13501-1, with a melting point \geq steel and thermal conductivity \leq steel
	Metal pipes	Fire behaviour class A1 as per EN 13501-1, with a melting point \geq copper and thermal conductivity \leq copper
	alpex multilayer composite pipe	FRÄNKISCHE ROHRWERKE Gebr. Kirchner GmbH & Co. KG
	CLEVERFIT Radial	Purmo Group Poland sp.z o. o.
	EASYTEC installation conduit	PG Austria GmbH
	Geberit Mepla system pipe	Geberit Vertriebs GmbH
	Geberit system pipe ML	Geberit Vertriebs GmbH
	HENCO multilayer composite pipe	HENCO Industries NV
	JRG Sanipex MT	Georg Fischer JRG AG
	KELOX® modular pipe	KE KELIT Kunststoffwerk GmbH
	MT multilayer pipe	Winkler GmbH
	PERTAL ²	KAN-therm GmbH
	POLYSAN/REVI aluminium composite pipe	Polysan HandelsgesmbH & Co KG
	PRINETO Stabil pipe	IVT Installations- und Verbindungstechnik GmbH & CO. KG
	RADOPRESS	Pipeline Austria GmbH & Co KG
	RAUTITAN stabil	REHAU Gesellschaft m.b.H.
	Raxofix multilayer composite pipe	Viega GmbH
	Roth Alu-Laserplus® system pipe	ROTH WERKE GMBH
	STEELOX® Plus	KE KELIT Kunststoffwerk GmbH
	TECEflex composite pipe	TECE GmbH
	TECElogo composite pipe	TECE GmbH
	Uponor composite pipe	Uponor Vertriebs GmbH
	Plastic electrical conduits with an outer diameter of \leq 40 mm (with/without cable with an outer diameter of \leq 21 mm)	
	Tightly secured bundles up to a total diameter \leq 100 mm consisting of plastic electrical conduits with an outer diameter of \leq 40 mm (with/without cable with an outer diameter of \leq 21 mm)	
	All types of sheathed cables currently used in the European construction industry (with the exception of waveguides), with an outer diameter of \leq 21 mm	
	Tightly secured cable bundles up to a total diameter of \leq 100 mm consisting of sheathed cables currently used in the European construction industry (with the exception of waveguides), with an outer diameter of \leq 21 mm	
RORCOL M	Metal pipes	Fire behaviour class A1 as per EN 13501-1, with a melting point \geq steel and thermal conductivity \leq steel
FIRE PROOF	Metal pipes	Fire behaviour class A1 as per EN 13501-1, with a melting point \geq steel and thermal conductivity \leq steel
	Metal pipes	Fire behaviour class A1 as per EN 13501-1, with a melting point \geq copper and thermal conductivity \leq copper
Rockwool 800	Metal pipes	Fire behaviour class A1 as per EN 13501-1, with a melting point \geq steel and thermal conductivity \leq steel
	Metal pipes	Fire behaviour class A1 as per EN 13501-1, with a melting point \geq copper and thermal conductivity \leq copper

⁽¹⁾ Exclusively cross-laminated timber constructions according to ETA-06/0138, ETA-09/0036 and ETA-14/0349

⁽²⁾ Exclusively cross-laminated timber constructions according to ETA-12/0281 and ETA-20/0843

DECLARATION OF PERFORMANCE

Permissible pipe types

Permissible separating elements / outer pipe diameter					Pipe end configuration
FW	RW	TW	RF	TF	
≤ 76	≤ 76	≤ 76	≤ 76	≤ 76	U/C
≤ 22	≤ 42	≤ 42	≤ 54	≤ 42	
≤ 63	≤ 63	–	–	–	
≤ 63	≤ 63	–	≤ 63	≤ 63	
≤ 63	≤ 63	–	≤ 63	≤ 63	
≤ 63	≤ 63	≤ 63	≤ 63	≤ 63	
–	≤ 63	≤ 63	≤ 63	$\leq 63^{(1)}$	
20	20	20	20	20	
40	40	–	≤ 63	≤ 63	
≤ 75	≤ 75	≤ 63	≤ 63	≤ 63	
40	40	–	40-63	40-63	
≤ 63	≤ 63	–	≤ 20	≤ 20	
20	20	20	20	20	
≤ 63	≤ 63	–	–	–	
≤ 40	≤ 40	–	≤ 63	≤ 63	
≤ 40	≤ 63	≤ 63	≤ 63	≤ 63	
≤ 63	≤ 63	≤ 63	50	≤ 50	
≤ 63	≤ 63	–	–	–	
–	≤ 25	–	≤ 25	–	
≤ 63	≤ 63	≤ 63	≤ 63	≤ 63	
≤ 63	≤ 63	–	–	–	
≤ 63	≤ 63	≤ 63	≤ 50	≤ 50	
✓	✓	✓	✓	✓	–
✓	✓	✓	✓	✓	
✓	✓	✓	✓	✓	
✓	✓	✓	✓	✓	
–	≤ 76	–	–	–	U/C
≤ 76	≤ 76	≤ 76	≤ 76	≤ 76	U/C
≤ 42	≤ 42	≤ 42	≤ 54	≤ 54	
–	–	–	–	$\leq 76^{(1)}$	U/C
				$\leq 42^{(1)}$	

DECLARATION OF PERFORMANCE

Permissible insulation

Material	Product	Manufacturer	Standard
Polyethylene (PE)	e.g. steinoflex® 405 R, steinoflex 445®, Tubolit AR Fonoblok	e.g. Steinbach Dämmstoff GmbH, Armacell Austria GmbH	EN 14313
	Alpex F50 PROFI pre-insulated multilayer composite pipe	FRÄNKISCHE ROHRWERKE Gebr. Kirchner GmbH & Co. KG	
	Alu-Laserplus pre-insulated	ROTH WERKE GMBH	
	Astraflex PE	Armacell Austria GmbH	
	CLEVERFIT Radial pre-insulated	Purmo Group Poland sp. z o.o.	
	Insulation pre-insulated pipe concentric	IVT Installations- und Verbindungstechnik GmbH & Co. KG	
	EasyTec pipe pre-insulated	PG Austria GmbH	
	Geberit system pipe ML pre-insulated	Geberit Vertriebs GmbH & Co KG	
	Geberit Mepla system pipe pre-insulated	Geberit Vertriebs GmbH & Co KG	
	Henco pipe insulated standard	Henco Industries NV	
	JRG Sanipex MT insulated	Georg Fischer JRG AG	
	KELOX Plus	KE KELIT Kunststoffwerk GesmbH	
	MT multilayer pipe with thermal insulation	Winkler GmbH	
	PERTAL ² with insulating hose	KAN-therm GmbH	
	POLYSAN/REVI aluminium composite pipe with insulation	Polysan HandelsgesmbH & Co KG	
	Radopress pre-insulated	Pipelife Austria GmbH & Co KG	
	Rautitan stabil pre-insulated	REHAU Gesellschaft m.b.H	
	Raxofix multilayer composite pipe with all-round insulation	Viega GmbH	
	STEELOX Plus	KE KELIT Kunststoffwerk GesmbH	
	TECEflex multilayer composite pipe pre-insulated	TECE GmbH	
	TECElogo multilayer composite pipe pre-insulated	TECE GmbH	
	Uponor Uni Pipe PLUS white pre-insulated	Uponor Vertriebs GmbH	
Elastomeric foam (EL)	AF/Armaflex	Armacell GmbH	–
	Armaflex XG	Armacell Poland Sp. z o.o.	
	Kaiflex-ST	Kaimann GmbH	
	K-FLEX ST	L'ISOLANTE K-FLEX S.p.A.	
Polyester fleece (PV)	Austrovlies® thin wall	Armacell Austria GmbH	–
	Austrovlies® drain		
Mineral wool (AK)	e.g. ISOVER lamella insulation mat LAM/ANB	e.g. Saint-Gobain Austria GmbH	EN 14303
	e.g. Austroflex glass wool lamella mat	e.g. Armacell Austria GmbH	

DECLARATION OF PERFORMANCE

Permissible insulation – standard pipes

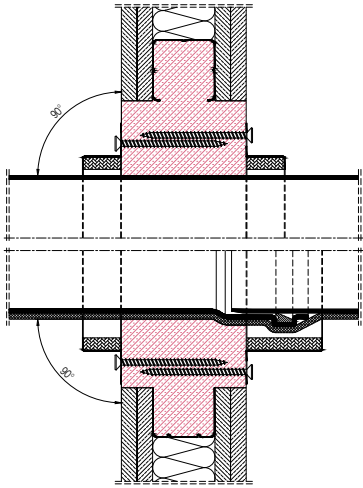
Type	Material / product	Standard / manufacturer	Pipe diameter [mm]	Insulation [mm]		Insulation type
				Without	PE	
RORCOL V30 and RORCOL V60	ABS	EN 1455-1	≤ 160	✓	≤ 5	LS/CS
		EN 15493	≤ 160			
	PE	EN 12201-2	≤ 160	✓	≤ 5	
		EN 12666-1				
		EN ISO 15494				
		EN 1519-1				
	PP	EN ISO 15494	≤ 160	✓	≤ 5	
		EN ISO 15874-2				
		EN 1451-1				
	PVC-U	EN 1329-1	≤ 160	✓	≤ 5	
		EN 1401-1				
		EN 1452-2				
		EN 1453-1				
		EN ISO 15493				
	PVC-C	EN 1566-1	≤ 160	✓	≤ 5	
		EN ISO 15493				
		EN 15877-2				
	SAN+PVC	ISO 19220	≤ 160	✓	≤ 5	

DECLARATION OF PERFORMANCE

Installation details & application areas

1

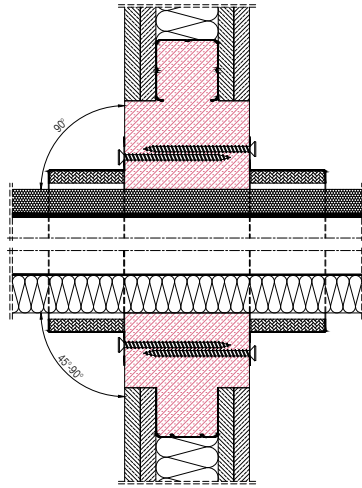
RORCOL V30 or RORCOL V60
for plastic pipes
with/without insulation



RORCOL V60
for plastic pipes with sleeve coupling
with/without insulation

2

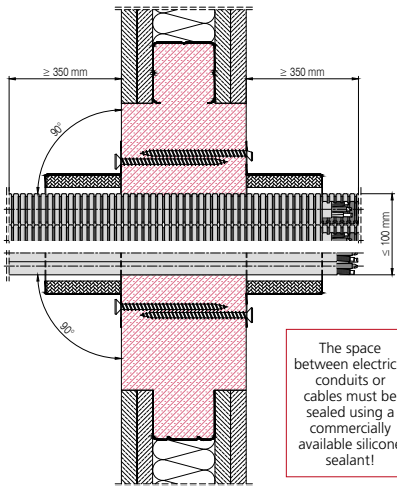
RORCOL AV60
for multi-layer composite pipes



RORCOL AV60
for metal pipes

3

RORCOL AV60 ≤ DN110
for bundles of electrical conduits
with/without cables



The space
between electrical
conduits or
cables must be
sealed using a
commercially
available silicone
sealant!

RORCOL AV60 ≤ DN110
for cable bundles ≤ Ø100

DECLARATION OF PERFORMANCE

Flexible walls

Mixed penetration seal with pipe collars

Flexible walls, thickness ≥ 100 mm

Type	Standard / product	Material	Max. number of pipes per collar	Pipe diameter [mm]	Insulation [mm]				Fire resist- ance
					With- out	PE	EL	AK	
RORCOL V30 and RORCOL V60	EN 1519-1	PE	1 pipe	≤ 110	✓	≤ 5	–	–	EI90
	Geberit PE								
	Geberit Silent-db20								
	Wavin PE								
	EN 1451-1	PP			✓	≤ 5	–	–	
	Ostendorf HT								
	Rehau HT								
	Valsir PP								
	DYKA Stil®								
	Geberit Silent-PP								
	PhonEX AS								
	POLO-KAL 3S								
	POLO-KAL NG/XS								
	RAUPIANO PLUS								
	Valsir Silere								

⁽¹⁾ Exclusively single penetrations (1 pipe per collar)

Cable penetration seals with pipe collars

Flexible walls, thickness ≥ 100 mm

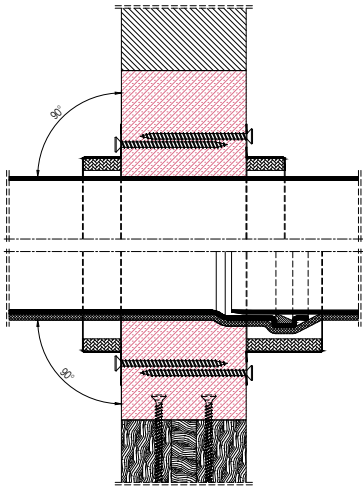
Type	Max. DN	Standard / product	Elements fed through	Outer diameter of bundle [mm]	Outer diameter of electrical conduits [mm]	Cable dimensions [mm]	Fire resist- ance
RORCOL AV60	110	EN 61386-22	Bundle of electrical conduits	≤ 100	≤ 40	≤ 21	EI90
		All types of sheathed cables	Cable bundle		-		

DECLARATION OF PERFORMANCE

Installation details & application areas

4

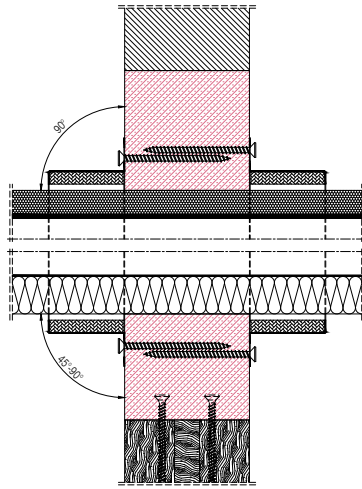
RORCOL V30 or RORCOL V60
for plastic pipes
with/without insulation



RORCOL V60
for plastic pipes with sleeve coupling
with/without insulation

5

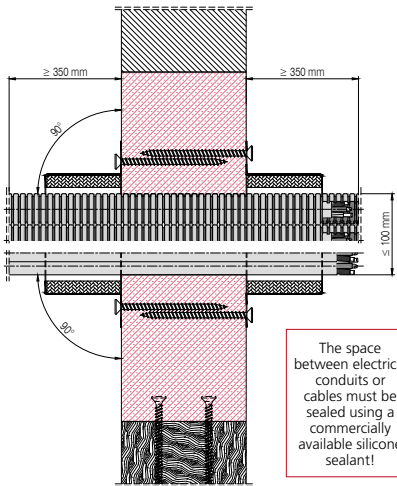
RORCOL AV60
for multi-layer composite pipes



RORCOL AV60
for metal pipes

6

RORCOL AV60 ≤ DN110
for bundles of electrical conduits
with/without cables



The space
between electrical
conduits or
cables must be
sealed using a
commercially
available silicone
sealant!

RORCOL AV60 ≤ DN110
for cable bundles

DECLARATION OF PERFORMANCE

Rigid walls & cross-laminated timber walls

Mixed penetration seal with pipe collars

Rigid walls & cross-laminated timber walls, thickness ≥ 100 mm

Type	Standard / product	Material	Max. number of pipes per collar	Pipe diameter [mm]	Insulation [mm]				Fire resist- ance			
					With- out	PE	EL ⁽⁴⁾	AK				
RORCOL V30 and RORCOL V60	EN 1519-1	PE	1 pipe	≤ 160	✓	≤ 5	19 (Ø110)	–	EI90			
	Geberit PE											
	Geberit Silent-db20											
	Wavin PE											
	EN 1451-1	PP			✓	≤ 5	9 (Ø125)	–				
	Ostendorf HT											
	Rehau HT											
	Valsir PP											
	Blackfire®(1)				–	5	–	–				
	DYKA Stil®				✓	≤ 5	–	–				
	Geberit Silent-PP				–	5	–	–				
	PhonEX AS				–	5	–	–				
	Pipelife Master 3 PLUS				–	5	–	–				
	POLO-KAL 3S				–	5	–	–				
	POLO-KAL NG/XS			✓	≤ 5	13(Ø110) 19(Ø125)	–					
RAUPIANO PLUS	✓	≤ 5	–	–								
Valsir Silere	–	5	19(Ø135)	–								
RORCOL AV60	Multi-layer composite pipes according to “Permissible pipe types” table on page 24-25	Al-PE	4 pipes	≤ 17	–	9-10	9	–	EI90			
			1 pipe	≤ 21			9-10	9-13		≤ 30 ⁽²⁾		
				≤ 26				9-25		≤ 40		
				≤ 33				9-32		≤ 50		
				≤ 42				13-32		≤ 60		
				≤ 52				13-43		≤ 50		
				≤ 63				43		50		
				≤ 75								
				Metal pipes		Copper/ steel	1 pipe	≤ 16		9-10 ⁽³⁾	9	≥ 20
								≤ 22			13	
								≤ 42			19	
						Steel		≤ 76		–	–	32
	RORCOL M	Metal pipes	Steel	1 pipe	≤ 76	–	–	–		≥ 20	EI90	

⁽¹⁾ Exclusively rigid walls or cross-laminated timber walls according to ETA-12/0281 and ETA-20/0843

⁽²⁾ Exclusively single penetrations (1 pipe per collar)

⁽³⁾ Exclusively rigid walls

⁽⁴⁾ Exclusively RORCOL V60 and RORCOL AV60

Cable penetration seals with pipe collars

Rigid walls & cross-laminated timber walls, thickness ≥ 100 mm

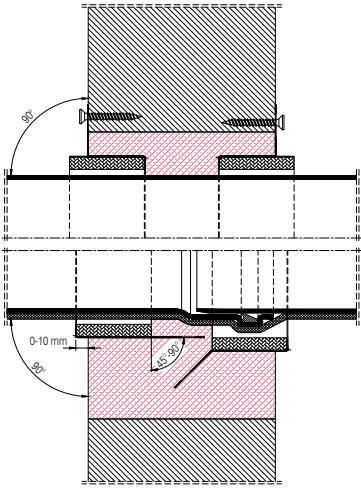
Type	Max. DN	Standard / product	Elements fed through	Outer diameter of bundle [mm]	Outer diameter of electrical conduits [mm]	Cable dimensions [mm]	Fire resist- ance
RORCOL AV60	110	EN 61386-22	Bundle of electrical conduits	≤ 100	≤ 40	≤ 21	EI90
		All types of sheathed cables	Cable bundle		–		

DECLARATION OF PERFORMANCE

Installation details & application areas

7

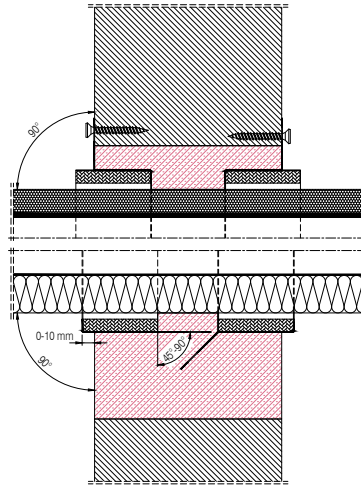
RORCOL V30 or RORCOL V60
for plastic pipes
with/without insulation



RORCOL V60
for plastic pipes with sleeve coupling
with/without insulation

8

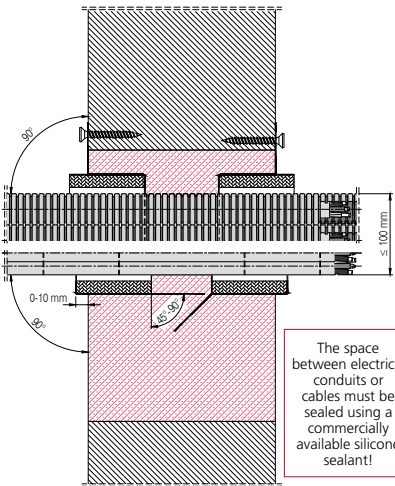
RORCOL AV60
for multi-layer composite pipes



RORCOL AV60
for metal pipes

9

RORCOL AV60 ≤ DN110
for bundles of electrical conduits
with/without cables



RORCOL AV60 ≤ DN110
for cable bundles

DECLARATION OF PERFORMANCE

Flush mounting in rigid walls

Mixed penetration seal with pipe collars

Rigid walls, thickness ≥ 150 mm

Type	Standard / product	Material	Max. number of pipes per collar	Pipe diameter [mm]	Insulation [mm]				Fire resistance					
					With-out	PE	EL ⁽²⁾	AK						
RORCOL V30 and RORCOL V60	EN 1519-1	PE	1 pipe	≤ 160	✓	≤ 5	19 (Ø110)	–	EI90					
	Geberit PE													
	Geberit Silent-db20													
	Wavin PE													
	EN 1451-1	PP			✓	≤ 5	9 (Ø125)	–						
	Ostendorf HT													
	Rehau HT													
	Valsir PP													
	Blackfire®				–	5	–	–						
	DYKA Stil®				✓	≤ 5	–	–						
	Geberit Silent-PP				–	5	–	–						
	PhonEX AS				≤ 135	–	5	–		–				
	Pipelife Master 3 PLUS				–	5	–	–						
	POLO-KAL 3S				–	5	–	–						
	POLO-KAL NG/XS	≤ 160		✓	≤ 5	13(Ø110) 19(Ø125)	–							
RAUPIANO PLUS	✓		≤ 5	–	–									
Valsir Silere	–		5	19(Ø125)	–									
RORCOL AV60	Multi-layer composite pipes according to “Permissible pipe types” table on page 24-25	Al-PE	4 pipes	≤ 17	–	9-10	9	–	EI90					
			1 pipe	≤ 21			9-10	9-13		≤ 30 ⁽¹⁾				
				≤ 26				9-25		≤ 40				
				≤ 33				9-32		≤ 50				
				≤ 42				13-32		≤ 60				
				≤ 52				13-43		≤ 50				
				≤ 63				43		50				
				≤ 75										
				Metal pipes				Copper/ steel		1 pipe	≤ 16	9-10	9	≥ 20
										≤ 22	–	13		
	≤ 42	–	19											
	≤ 76	–	32				≥ 30							

⁽¹⁾ Exclusively for single penetrations (1 pipe per collar)

⁽²⁾ Exclusively RORCOL V60 and RORCOL AV60

Cable penetration seals with pipe collars

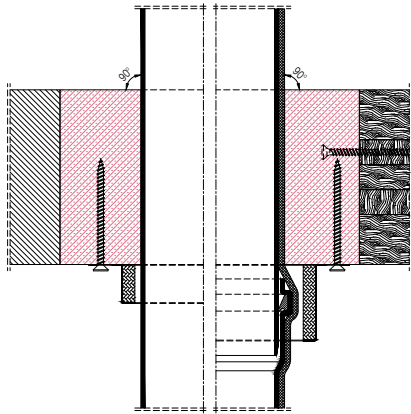
Rigid walls, thickness ≥ 150 mm

Type	Max. DN	Standard / product	Elements fed through	Outer diameter of bundle [mm]	Outer diameter of electrical conduits [mm]	Cable dimensions [mm]	Fire resistance
RORCOL AV60	110	EN 61386-22	Bundle of electrical conduits	≤ 100	≤ 40	≤ 21	EI90
		All types of sheathed cables	Cable bundle		–		

DECLARATION OF PERFORMANCE

Installation details & application areas

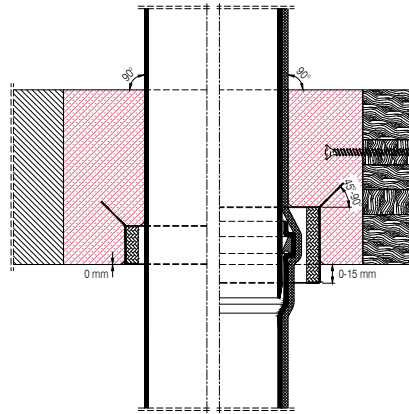
10



RORCOL V30 or RORCOL V60
for plastic pipes
with/without insulation

RORCOL V60
for plastic pipes with sleeve coupling
with/without insulation

11

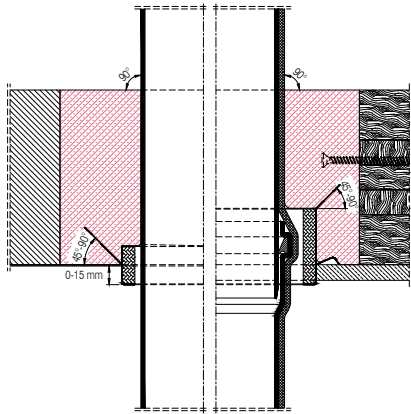


RORCOL V30 or RORCOL V60
for plastic pipes with/without
insulation

RORCOL V60
for plastic pipes with sleeve coupling
with/without insulation

12

Installation with permanent formwork



RORCOL V30 or RORCOL V60
for plastic pipes
with/without insulation

RORCOL V60
for plastic pipes with sleeve coupling
with/without insulation

DECLARATION OF PERFORMANCE

Rigid floors/ceilings & cross-laminated timber floors/ceilings

Mixed penetration seal with pipe collars

Rigid floors/ceilings & cross laminated timber floors/ceilings, thickness ≥ 140 mm

Type	Standard / product	Material	Max. number of pipes per collar	Pipe diameter [mm]	Insulation [mm]				Fire resistance
					with-out	PE	EL ^(2e)	AK	
RORCOL V30 and RORCOL V60	EN 1519-1	PE	1 pipe	≤ 160	✓	≤ 5	13 (Ø110) 19 (Ø135)	–	EI90
	Geberit PE								
	Geberit Silent-db20								
	Wavin PE								
	EN 1451-1	PP		≤ 160	✓	≤ 5	13 (Ø110) 19 (Ø125)	–	
	Ostendorf HT								
	Rehau HT								
	Valsir PP								
	Blackfire®			75, 110	–	5	–	–	
	DYKA Stil®			≤ 160	✓	≤ 5	13(Ø110) 19(Ø125)	–	
	Geberit Silent-PP			≤ 160	–	5	–	–	
	Geberit Silent-Pro ⁽¹⁾			≤ 160	–	5	–	–	
	PhonEX AS			≤ 135	–	5	–	–	
	Pipelife Master 3 PLUS			≤ 125	–	5	–	–	
	POLO-KAL 3S			≤ 160	–	5	–	–	
	POLO-KAL NG/XS			≤ 160	–	5	13(Ø110) 19(Ø125)	–	
	RAUPIANO PLUS			≤ 160	✓	≤ 5	–	–	
	Valsir Silere			≤ 160	–	5	19(Ø125)	–	

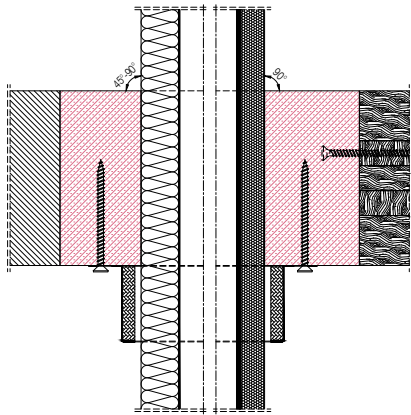
⁽¹⁾ Exclusively cross laminated timber floors/ceilings according to ETA-12/0281 and ETA-20/0843

⁽²⁾ Exclusively RORCOL V60

DECLARATION OF PERFORMANCE

Installation details & application areas

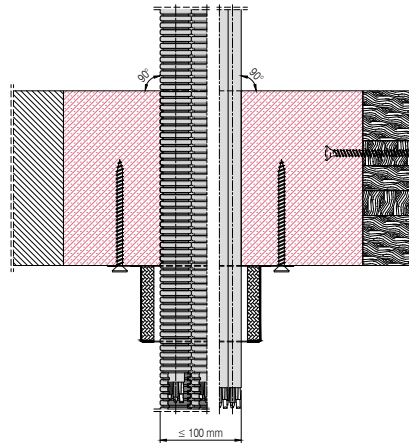
13



RORCOL AV60
for metal pipes

RORCOL AV60
for multi-layer composite pipes

14

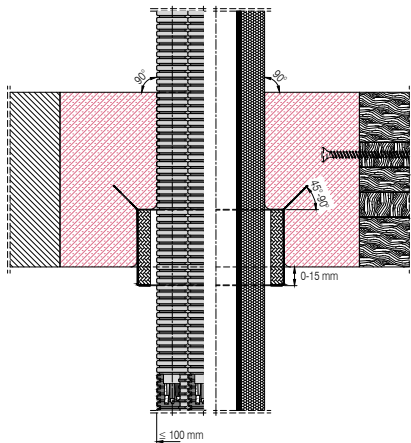


The space between electrical conduits or cables must be sealed using a commercially available silicone sealant!

RORCOL AV60 ≤ DN110
for bundles of electrical conduits
with/without cables

RORCOL AV60 ≤ DN110
for cable bundles

15



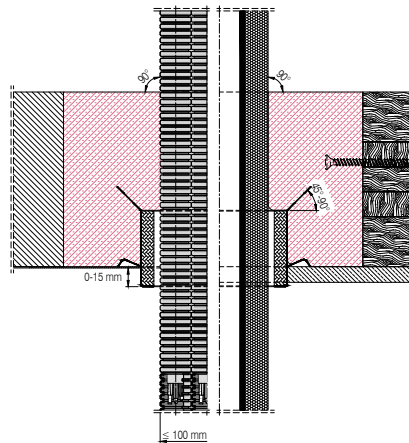
The space between electrical conduits or cables must be sealed using a commercially available silicone sealant!

RORCOL AV60 ≤ DN110
for cable bundles and bundles of
electrical conduits
with/without cables

RORCOL AV60
for multi-layer composite pipes
and metal pipes

16

Installation with permanent formwork



The space between electrical conduits or cables must be sealed using a commercially available silicone sealant!

RORCOL AV60 ≤ DN110
for cable bundles and bundles of
electrical conduits
with/without cables

RORCOL AV60
for multi-layer composite pipes
and metal pipes

DECLARATION OF PERFORMANCE

Rigid floors/ceilings & cross-laminated timber floors/ceilings

Mixed penetration seal with pipe collars

Rigid floors/ceilings & cross laminated timber floors/ceilings,
thickness ≥ 140 mm

Type	Standard / product	Material	Max. number of pipes per collar	Pipe diameter [mm]	Insulation [mm]				Fire resistance
					with-out	PE	EL	AK	
RORCOL AV60	Multi-layer composite pipes according to "Permissible pipe types" table on page 24-25	Al-PE	4 pipes	≤ 17	-	9-10	9	-	EI90
				≤ 21				$\leq 30^{(1)}$	
			1 pipe	≤ 26		-	-	9-13	
				≤ 33				9-25	
				≤ 42				9-32	
				≤ 52				13-32	
				≤ 63				13-43	
				≤ 16			-	6-25	
		Copper / steel	1 pipe	≤ 35				13	
				≤ 42				-	
				$\leq 54^{(2)}$				-	
				≤ 76				32	

⁽¹⁾ Exclusively for single penetrations (1 pipe per collar)

⁽²⁾ Exclusively rigid floors/ceilings

Cable penetration seals

Rigid walls, thickness ≥ 150 mm

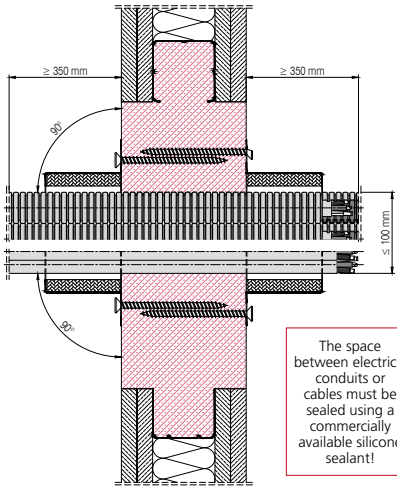
Type	Max. DN	Standard / product	Elements fed through	Outer diameter of bundle [mm]	Outer diameter of electrical conduits [mm]	Cable dimensions [mm]	Fire resistance
RORCOL AV60	110	EN 61386-22	Bundle of electrical conduits	≤ 100	≤ 40	≤ 21	EI90
		All types of sheathed cables	Cable bundle		-		

DECLARATION OF PERFORMANCE

Installation details & application areas

17

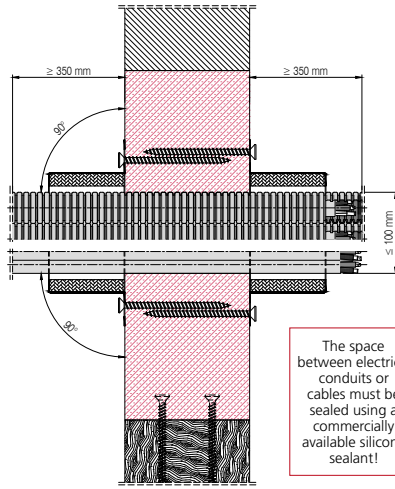
RORCOL AV60 ≤ DN110
for bundles of electrical conduits
with/without cables



RORCOL AV60 ≤ DN110
for cable bundles ≤ Ø100

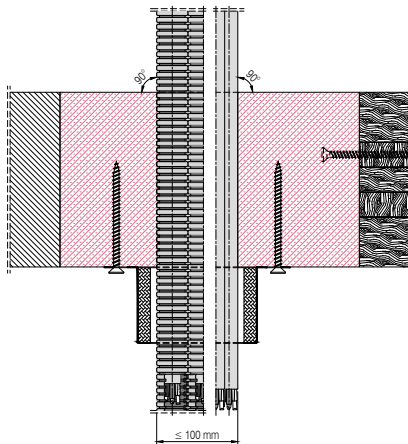
18

RORCOL AV60 ≤ DN110
for bundles of electrical conduits
with/without cables



RORCOL AV60 ≤ DN110
for cable bundles

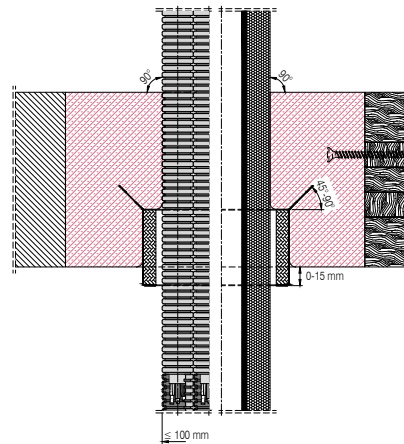
19



RORCOL AV60 ≤ DN110
for bundles of electrical conduits
with/without cables

RORCOL AV60 ≤ DN110
for cable bundles

20



RORCOL AV60 ≤ DN110
for cable bundles and bundles of
electrical conduits
with/without cables

RORCOL AV60
for multi-layer composite pipes
and metal pipes

DECLARATION OF PERFORMANCE

Electrics and air conditioning

Cable penetration seals with pipe collars

Walls, thickness ≥ 100 mm & floors/ceilings, thickness ≥ 140 mm

Type	Max. DN	Standard / product	Elements fed through	Outer diameter of bundle [mm]	Outer diameter of electrical conduits [mm]	Cable dimensions [mm]	Fire resistance
RORCOL AV60	110	EN 61386-22	Bundle of electrical conduits	≤ 100	≤ 40	≤ 21	EI90
		All types of sheathed cables	Cable bundle		–		

Mixed penetration seal with pipe collars

Flexible walls & rigid walls, thickness ≥ 100 mm

Type	Standard / product	Material	Max. number of pipes per collar	Pipe diameter [mm]	Insulation [mm]			Fire resistance
					With-out	PE	EL	
RORCOL AV60	Metal pipes	Copper / steel	Multiple feedthrough	≤ 10	–	6	–	EI90
	Electrical conduit	EN 61386-22		≤ 16	–	10	–	
				≤ 25	1 pc. cable ≤ 3x1.5 mm ²			
	Metal pipes	Copper / steel	Multiple feedthrough	≤ 8	–	4	–	EI90
	Cable	–		≤ 12	–	9	–	
				–	1 pc. cable ≤ 3x1.5 mm ²			
	EN 1452-2	PVC-U		20	✓	–	–	

Mixed penetration seal with pipe collars

Rigid walls & cross-laminated timber walls, thickness ≥ 100 mm

Type	Standard / product	Material	Max. number of pipes per collar	Pipe diameter [mm]	Insulation [mm]			Fire resistance
					With-out	PE	EL	
RORCOL AV60	Metal pipes	Copper / steel	Multiple feedthrough	≤ 18	–	–	9	EI90
	Electrical conduit	EN 61386-22		≤ 22	–	–	9	
				≤ 20	1 pc. cable ≤ 5x2.5 mm²			

Mixed penetration seal with pipe collars

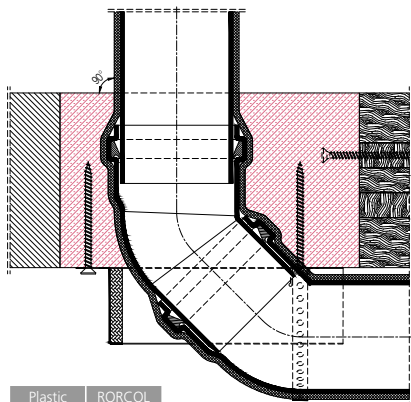
Rigid floors/ceilings & cross laminated timber floors/ceilings, thickness ≥ 140 mm

Type	Standard / product	Material	Max. number of pipes per collar	Pipe diameter [mm]	Insulation [mm]			Fire resistance
					With-out	PE	EL	
RORCOL AV60	Metal pipes	Copper / steel	Multiple feed-through	≤ 10	–	–	9	EI90
	Electrical conduit	EN 61386-22		≤ 16	–	–	9	
				≤ 25	1 pc. cable ≤ 5x2.5 mm ²			

DECLARATION OF PERFORMANCE

Installation details & application areas

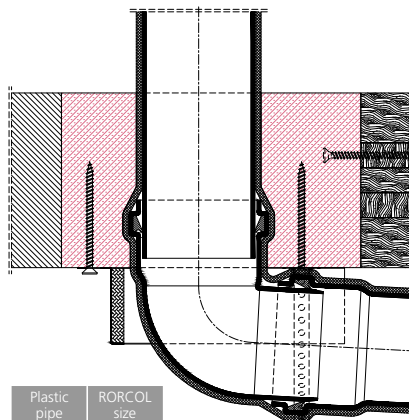
21 Pipe elbows 2x45°



Plastic pipe	RORCOL size
Ø 50	DN63
Ø 75	DN110
Ø 90	DN110
Ø 110	DN125
Ø 125	DN140
Ø 135	DN160

RORCOL V60
as U-application
for pipe elbows 2x45°
with/without insulation

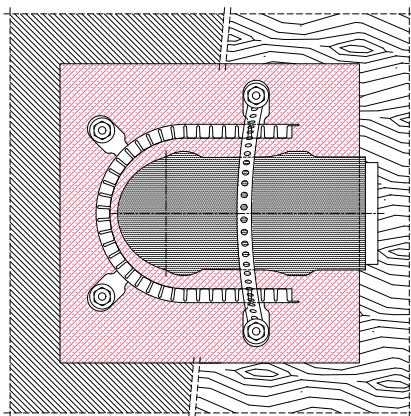
22 Pipe elbows 87°



Plastic pipe	RORCOL size
Ø 50	DN63
Ø 75	DN110
Ø 90	DN110
Ø 110	DN125
Ø 125	DN140
Ø 135	DN160

RORCOL V60
as U-application
for pipe elbows 87°
with/without insulation

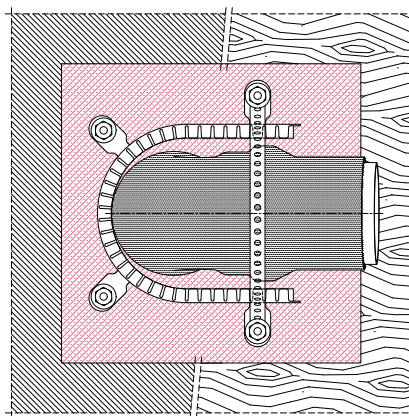
23 Pipe elbows 2x45°



Stainless steel perforated tape or
steel perforated tape with plastic coating
Width ≥ 17 mm, thickness ≥ 1 mm, hole diameter ≤ 7 mm

RORCOL V60
as U-application
for pipe elbows 2x45°
with/without insulation

24 Pipe elbows 87°



Stainless steel perforated tape or
steel perforated tape with plastic coating
Width ≥ 17 mm, thickness ≥ 1 mm, hole diameter ≤ 7 mm

RORCOL V60
as U-application
for pipe elbows 87°
with/without insulation

DECLARATION OF PERFORMANCE

U-application

U-application

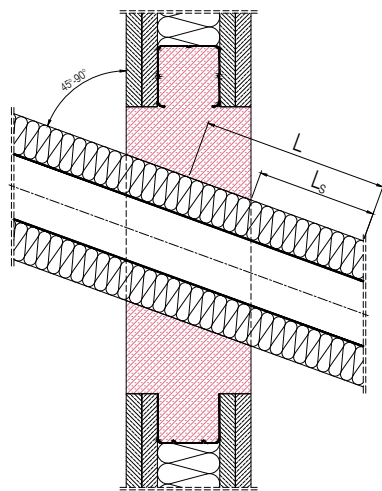
Rigid floors/ceilings & cross laminated timber floors/ceilings, thickness ≥ 140 mm

Type	Standard / product	Material	Pipe diameter [mm]	Insulation [mm]		Fire resistance
				Without	PE	
RORCOL V60	EN 1451-1	PP	≤ 110	–	5	EI90
	POLO-KAL NG		≤ 125	–	5	
	Valsir Silere		≤ 135	–	5	

DECLARATION OF PERFORMANCE

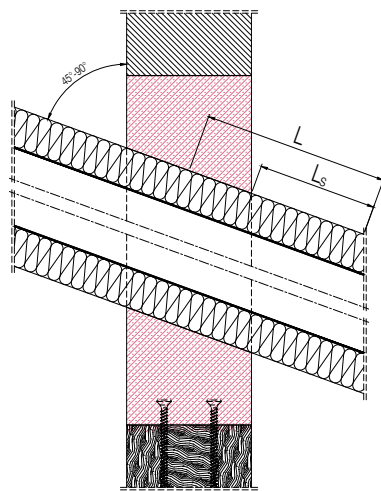
Installation details & application areas

25



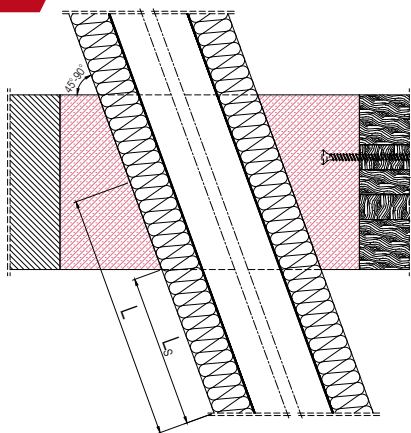
Pipe section
for metal pipes

26



Pipe section
for metal pipes

27



Pipe section
for metal pipes

Required insulation lengths Walls, thickness ≥ 100 mm

Pipe diameter [mm]	Insulation length [mm]	
	L	L _s
$\leq \varnothing 54$	≥ 500	≥ 450
$> \varnothing 54$	≥ 1000	≥ 950

Required insulation lengths Floors/ceilings, thickness ≥ 140 mm

Pipe diameter [mm]	Insulation length [mm]	
	L	L _s
$\leq \varnothing 54$	≥ 500	≥ 430
$> \varnothing 54$	≥ 1000	≥ 930

DECLARATION OF PERFORMANCE

Mixed penetration seal with pipe section

Mixed penetration seal Flexible walls, thickness ≥ 100 mm

Type	Standard / product	Material	Pipe diameter [mm]	Insulation thickness [mm]	Insulation length [mm]		Insulation type	Fire resistance
					L	L _s		
FIRE PROOF	Metal pipes	Copper / steel	≤ 42	20-40	≥ 500	≥ 450	LS	EI90
		Steel	≤ 54					
			≤ 76	20-50	≥ 1000	≥ 950		

Mixed penetration seal Rigid walls & cross-laminated timber walls, thickness ≥ 100 mm

Type	Standard / product	Material	Pipe diameter [mm]	Insulation thickness [mm]	Insulation length [mm]		Insulation type	Fire resistance
					L	L _s		
FIRE PROOF	Metal pipes	Copper / steel	≤ 42	20-40	≥ 500	≥ 450	LS	EI90
		Steel	≤ 54					
			≤ 76	20-50	≥ 1000	≥ 950		

Mixed penetration seal Rigid floors/ceilings & cross laminated timber floors/ceilings, thickness ≥ 140 mm

Type	Standard / product	Material	Pipe diameter [mm]	Insulation thickness [mm]	Insulation length [mm]		Insulation type	Fire resistance
					L	L _s		
FIRE PROOF	Metal pipes	Copper / steel	≤ 42	20-40	≥ 500	≥ 430	LS	EI90
		Steel	≤ 54					
			≤ 76	20-50	≥ 1000	≥ 930		
Rockwool 800 ⁽¹⁾	Metal pipes	Copper / steel	≤ 42	20-40	≥ 500	≥ 430	LS	EI90
		Steel	≤ 54					
			≤ 76	30-50	≥ 1000	≥ 930		

⁽¹⁾ Exclusively in cross-laminated timber floors/ceilings according to ETA-06/0138, ETA-09/0036 or ETA-14/0349

The performance of the aforementioned product corresponds to the declared performance(s). The manufacturer named above is solely responsible for producing the declaration of performance according to EU Regulation no. 305/2011.

Signed for the manufacturer and
in the name of the manufacturer by:

Wattens, November 2023

GOIDINGER 

BAU+LEICHTBETON GMBH
Salzburger Straße 40 · A-6112 Wattens
Tel.: +43-5224-52 9 40 · Fax 57 4 62
info@goidinger.com · www.goidinger.com

Arno Goidinger, CEO,
GOIDINGER Bau- und Leichtbeton GmbH

TIROTECH® fire protective mortar



Advantages

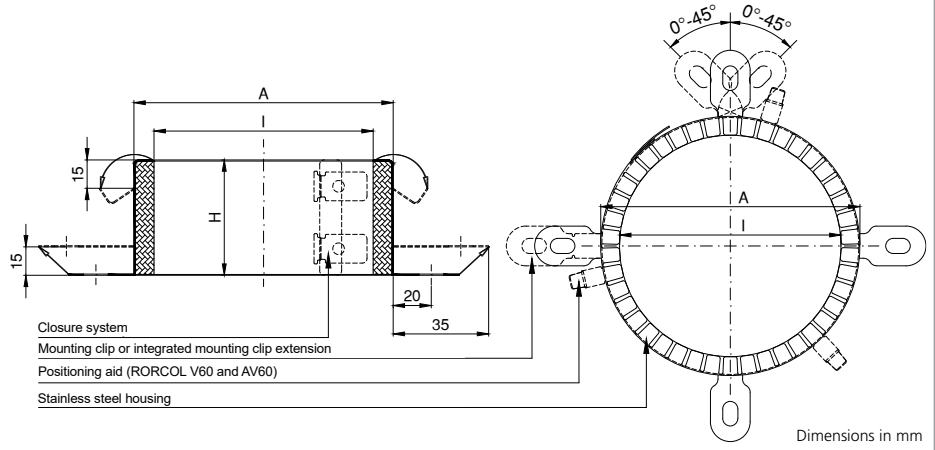
- Easy to apply
- Rapid setting
- High adhesion
- Moisture-resistant

Match code	BSM/S30
Dry bulk density	450kg/m ³
Use category	X
Thermal conductivity	0.12W/mK
Delivery form	30litre bag – weight 10kg
Water requirement	approx. 5litres/bag
Mixing time	approx. 1 minute
Working temperature	min. 8 °C
Can be painted over	Yes
Storage	Store in a dry place. Protect from moisture. Can be stored for approx. 6 months



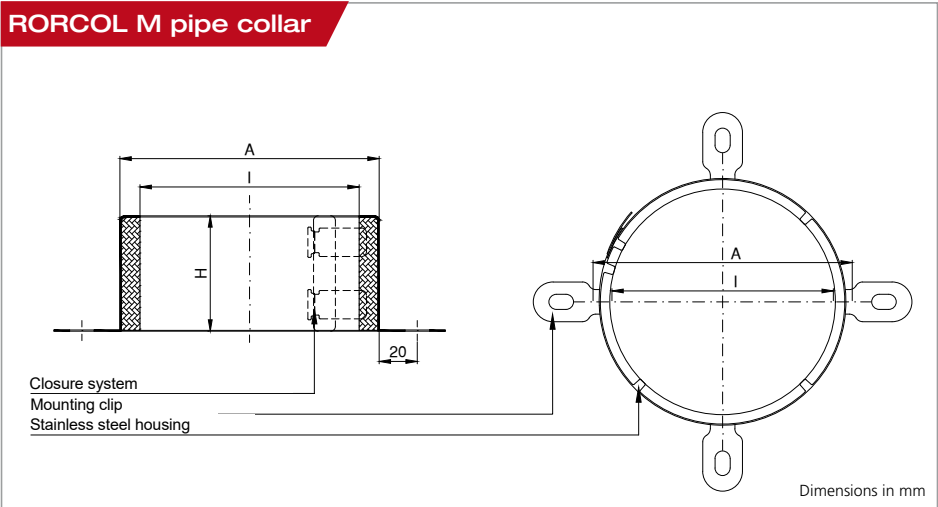
Installation video for mixed penetration seal TIROTECH®

Pipe collar RORCOL V30 - V60 - AV60

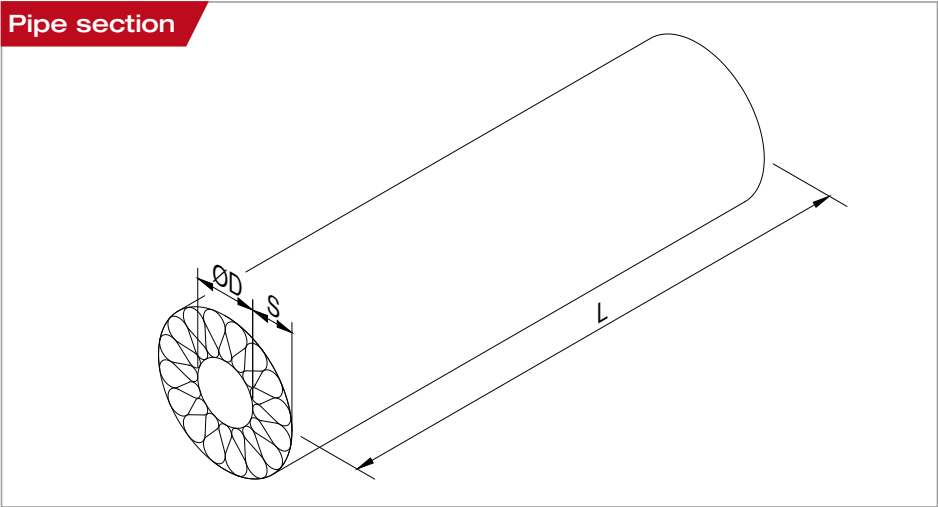


Length group	Field of application	Size	Installation depth [H] [mm]	Outer diameter [A] [mm]	Inner diameter [I] [mm]	Number of mounting clips
V30	For plastic pipes	DN40	31	57	46	3
		DN56		74	62	
		DN63		86	70	
		DN80		103	86	
		DN100		127	105	4
		DN110		142	119	
		DN125		161	133	
		DN140		178	146	
V60	For plastic pipes, extended field of application	DN56	61	74	62	3
		DN63		86	70	
		DN80		103	86	
		DN100		127	105	
		DN110		142	119	4
		DN125		161	133	
		DN140		178	146	
		DN160		201	168	5
		DN180		219	187	6
		DN200		246	209	8
AV60	For multi-layer composite pipes, cables and metal pipes	DN250	61	303	261	8
		DN40		58	45	3
		DN56		74	60	
		DN63		86	73	
		DN80		103	85	
		DN100		126	107	4
		DN110		138	120	
		DN125		158	135	
		DN140		177	150	
		DN160		197	171	5

Metal housing material: stainless steel



Length group	Field of application	Size	Installation depth [H] [mm]	Outer diameter [A] [mm]	Inner diameter [I] [mm]	Number of mounting clips
M	For metal pipes	DN110	61	131	119	4
		DN125		145	134	
		DN140		161	150	
		DN160		186	170	5
		DN200		231	209	6
		DN250		280	258	8
Metal housing material: stainless steel						



FIRE PROOF pipe section				
Field of application	Size	Outer pipe diameter ØD [mm]	Insulation thickness S [mm]	Length L [mm]
For metal pipes	FP/DN15/20	Ø15	20	1000
	FP/DN18/20	Ø18		
	FP/DN22/30	Ø22		
	FP/DN28/30	Ø28	30	
	FP/DN35/30	Ø35		
	FP/DN42/30	Ø42		
	FP/DN48/40	Ø48	40	
	FP/DN54/50	Ø54		
	FP/DN64/50	Ø64	50	
	FP/DN76/50	Ø76		

Rockwool 800 pipe section			
Field of application	Outer pipe diameter ØD [mm]	Insulation thickness S [mm]	Length L [mm]
For metal pipes	Ø15	20	1000
	Ø18		
	Ø22		
	Ø28	30	
	Ø35		
	Ø42		
	Ø48	40	
	Ø54	50	
	Ø64		
	Ø76		

Fire protection



Fire dampers*
INLAP
EI120(ho, ve, i ↔ o)S



Fire damper air vents**
FSA
FLI-VE(ho+ve)90



Access panels*
FIREREV
EI120 / EI90 / EI60 / EI30

GOIDINGER

BAU+LEICHTBETON GESELLSCHAFT MBH


Salzburgerstraße 40
A-6112 Wattens
T: +43 5224 52940-0
F: +43 5224 57462
E: info@goidinger.com
I: www.goidinger.com

In collaboration with:



Fire protection systems

Hanuschgasse 1/Top 4A
A-2540 Bad Vöslau
T: +43 1 982 01 74-0
F: +43 1 982 01 74-930
E: office@airfiretech.at
I: www.airfiretech.at

 1139
GOIDINGER Bau- und Leichtbeton GmbH Salzburgerstraße 40 6112 Wattens, AUSTRIA
17
1139-CPR-0668/17
ETA-17/0586
EAD 350454-00-1104
DOP 2023/TIROTECH
Pipe, cable and/or mixed penetration seal "TIROTECH®" Use category Y ₁
For further relevant properties, see ETA-17/0586

* Listed products are not subject to ETA regulation
** Classification and use according to national guidelines